

# Density Functional Theory Techniques for Electron Energy Loss Analysis of Lithium Materials

Quentin Stoyel, Mining and Materials Engineering, McGill University,  
Montreal

November 2018

A thesis submitted to McGill University in partial fulfillment of the requirements of the  
degree of Masters of Science



©Quentin Stoyel 2018

# Contents

Table of Contents . . . . .	i
Abstract . . . . .	iii
Abrégé . . . . .	iv
Acknowledgements . . . . .	v
Contribution of Authors . . . . .	vi
<b>1 Introduction</b>	<b>1</b>
<b>2 Literature Review</b>	<b>4</b>
2.1 Electron Energy Loss Spectroscopy (EELS) . . . . .	4
2.1.1 Electron Microscopy . . . . .	4
2.1.2 EELS in Experiment . . . . .	10
2.1.3 Beam Damage . . . . .	13
2.1.4 Lithium in EELS . . . . .	15
2.1.5 Preprocessing . . . . .	16
2.1.6 Other Experimental Techniques . . . . .	19
2.2 Density Functional Theory (DFT) . . . . .	21
2.2.1 DFT Background . . . . .	22
2.2.2 Formulation . . . . .	22
2.2.3 WIEN2k . . . . .	28
2.2.4 Quantum Theory of Atoms in Molecules . . . . .	29
2.2.5 Lithium in DFT . . . . .	30

2.3	EELS Calculations . . . . .	30
2.3.1	Time Dependent Density Functional Theory (TDDFT) . . . . .	32
2.3.2	Cross Section Approach . . . . .	34
2.3.3	Beth Salpeter Equations (BSE) . . . . .	34
2.3.4	Core Hole Approximations . . . . .	35
<b>3</b>	<b>Methods</b>	<b>40</b>
3.1	Improvement to Core Hole Shielding Calculations . . . . .	40
3.2	Implementation . . . . .	43
3.3	Calculation Details . . . . .	43
3.4	Experimental Details . . . . .	44
<b>4</b>	<b>Results and Discussion</b>	<b>45</b>
4.1	Lithium Oxide . . . . .	45
4.2	Metallic Lithium . . . . .	47
4.3	Lithium Fluoride . . . . .	50
4.4	Li-LiF Mixture . . . . .	51
4.5	Discussion . . . . .	53
<b>5</b>	<b>Conclusion</b>	<b>56</b>
<b>A</b>	<b>Calculation Details</b>	<b>58</b>
A.1	Crystal Structures . . . . .	58
A.2	DFT Parameters . . . . .	59

# Abstract

Electron energy loss spectroscopy (EELS) is an electron microscopy technique ideal for characterizing lightweight elements. The technique relies on using reference spectra to fingerprint and analyze results. These references can be obtained either through experiments on standards or through simulation. Simulations provide the ability to produce spectra for previously unstudied or sensitive materials, but rely on numerous approximations. Central to the simulation of EELS are the approximations treating core holes and shielding. In this work, a new method of calculating the magnitude of core hole screening in the case of lithium materials is developed and implemented in density functional theory calculations. The method is used to verify the validity of performing electron energy loss spectroscopy at 30 keV to reduce beam damage. EELS fine structure are calculated for metallic lithium,  $\text{Li}_2\text{O}$ , and  $\text{LiF}$  and marked improvements in agreement between calculation and experiment are observed. The technique uses linear response theory to relate the electron density to the core hole shielding contribution. This contribution is then implemented via a non integer core hole in final state rule density functional theory calculations. The improvements enabled by the technique open the possibility of conducting increasingly quantitative EELS analysis.

# Abrégé

La spectroscopie par perte d'énergie des électrons (EELS) est une technique de caractérisation sensible aux éléments de faible masse. L'analyse EELS requiert des spectres de références pour valider les résultats obtenus. Les simulations de spectres offrent une façon d'obtenir des références pour des nouveaux matériaux. Bien que les simulations soient utiles, elles requièrent des ajustements de paramètres. Un de ces paramètres est la façon de gérer un trou d'état de cœur. Une nouvelle technique pour calculer l'intensité de masquage des trous d'électrons est proposée, ce qui a pour effet d'augmenter la précision des spectres EELS des matériaux contenant du lithium. La méthode est appliquée pour vérifier la pertinence de conduire des expériences EELS à 30 keV, ce qui a pour effet de minimiser l'endommagement des échantillons induits par le faisceau d'électron. La méthode est basée sur la théorie de la réponse linéaire, qui relie la densité des électrons aux effets de masquage. Ces effets sont par la suite représentés par un trou partiel dans les calculs par la théorie de la fonctionnelle de la densité d'états d'électrons. En utilisant la technique proposée dans ce travail, les spectres EELS calculés pour le  $\text{Li}_2\text{O}$ , le  $\text{LiF}$  et le lithium métallique sont en meilleur accord avec les résultats expérimentaux de ces matériaux. Ces résultats ouvrent la porte à des méthodes quantitatives basées sur la spectroscopie EELS.

# Acknowledgements

Many people need to be acknowledged for helping make this work possible. Foremost are my supervisors, Professor Raynald Gauvin and Professor George P. Demopoulos for all their support, guidance, and valuable discussions. Equally essential to this work are Frédéric Voisard and Nicolas Brodusch who provided all the experimental results needed to verify the theoretical ones presented here. I would also like to thank Motoki Nakamura for taking the time to read and help edit my thesis and Frédéric Voisard for assistance in writing the French abstract. Acknowledgement is also due to the agencies who helped fund this work: NSERC and IREQ.

Support also came from a multitude of places in ways that were not always appreciated in the moment. To this end, I would like to thank everyone who helped instill me with love and excitement for physics and science. Whether it was in a classroom, a pub, or wandering the streets, those willing to seek out and discuss the world's interesting problems inspired me into making this work happen. Finally, I would like to thank my parents for knowing that this was my path well before I did, and supporting me every step of the way.

# Contribution of Authors

In this thesis, the author developed the calculation method presented in Chapter 3 and performed all of the density functional theory and Bader theory calculations for the results presented in Chapter 4. The author also performed all of the analysis and processing of the experimental spectra. The lithium K edge experimental spectra in Chapters 2 and 4, as well as the carbon K edge spectra in Figure 2.7 were obtained by Nicolas Brodusch and Frédéric Voisard. Prof. Raynald Gauvin and Prof. George P. Demopoulos supervised the research project.

# Chapter 1

## Introduction

The study of lithium materials has become increasingly relevant in recent years [1]. In particular, the field has been driven by the need to develop improved and more cost effective battery materials [1]. This drive has come from increasing demands for electric vehicles and portable electrical devices demanding longer lifetimes and faster charging. Many aspects of batteries can be improved as the theoretical limits have not yet been achieved in fundamental areas such as capacity, charge density, and charge/discharge rates.

The theoretical limits in the case of lithium ion batteries are especially high, as lithium offers a range of advantages relative to other charge carriers. As the third element on the periodic table, lithium is extremely lightweight, allowing lithium ion batteries to be smaller and lighter without sacrificing lifetime [2]. Lithium's small ion size makes it highly mobile, which leads to superior discharge rates [2]. Furthermore, as an alkali earth metal with a single weakly bound valence electron, lithium is highly electropositive. As a result, lithium ion batteries can achieve higher operating voltages than alternatives such as nickle-cadmium or lead-acid batteries [2]. Some of these comparative performance advantages to these alternatives are illustrated in Fig 1.1 [2].

The pursuit of further improving the performance of lithium batteries has shifted analysis



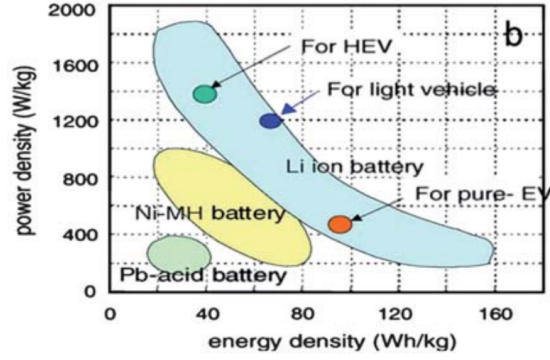


Figure 1.1: Plot illustrating the the power and energy densities achievable by three types of battery, as well as the minimum requirements for various types of electric vehicle, including hybrid electric vehicles (HEV), plug in hybrids (light vehicle). From Etacheri, 2011 [2].

of these materials increasingly towards measuring microstructure properties [3–5]. Identifying microscale features such as crystal structure, diffusion mechanics, and composition is an essential component of characterizing new battery materials [6]. These features are being increasingly analyzed through electron microscopy, which offers the high spatial resolution needed to analyze them and is becoming increasing accessibility [7–9].

Lithium materials however, present a range of challenges to electron microscopy. Battery materials are becoming increasingly intricate and lithium’s light weight and ionizable nature make it particularly susceptible to electron beams [10]. This sensitivity limits analysis largely to low dosage techniques to avoid damaging the samples long enough to acquire results. One such technique that is targeted for light elements, such as lithium, is electron energy loss spectroscopy (EELS) [11]. However, even using low dosage techniques, beam damage remains problematic for lithium materials. Recent developments such as low voltage EELS are allowing lithium analysis to become more routine [12]. As these new experimental techniques produce unprecedented results, a degree of theoretical support is required to confirm the methods and explain any irregularities.

Theoretical support for EELS comes most predominantly from methods based in density

functional theory (DFT). DFT is a first principles method capable of calculating materials properties using only the crystal structure as input. As in experiment however, lithium's lightweight nature complicates DFT calculations and results have been limited to qualitative findings [13; 14]. Much of the challenge in simulating EELS for lithium lies in the treatment of the electron hole created in excited atoms. Lithium's few electrons mean that core hole effects will almost always be present in the spectra which current methods in literature lack the subtlety to treat.

The goal of this work is to calculate meaningful EELS spectra of lithium materials, in particular, the K edge near edge structure, in the unprecedented context of EELS at 30 keV. This is accomplished by improving the treatment of core electron holes of lithium in DFT simulations.

The outline of this thesis is as follows: Chapter 2 presents an overview of EELS, DFT and theoretical EELS calculations. Chapter 3 describes the improved method developed in this work, and Chapter 4 applies the method to a number of lithium materials. Chapter 5 concludes the results and addresses future work.

# Chapter 2

## Literature Review

The focus of this work lies in first principle theoretical calculations of EELS calculations, designed to be performed without experimental input. However, new theoretical techniques must be validated through comparison to experiment. To this end, this chapter presents an overview of experimental electron microscopy and energy loss spectroscopy (EELS) before discussing the basics of first principles calculations. The chapter concludes with a review of the various methods used to calculate EELS theoretically. The particularities of lithium materials are discussed at each step of this process.

### 2.1 Electron Energy Loss Spectroscopy (EELS)

#### 2.1.1 Electron Microscopy

The drive to improve battery materials relies on characterizing nano scale features which define their properties [15]. At these length scales, even state of the art optical light microscopes lack the resolution to discern these features [16]. This limitation is due to the fact that nano scale features fall well below the diffraction limit of such microscopes, given by [17]:

$$d = \frac{\lambda}{2n \sin(\theta)} \tag{2.1}$$

Where  $n$  is the refractive index and  $d$  is the smallest distance between two discernible objects. For optical light ( $\lambda = 400\text{-}800\text{nm}$ ), it is impossible to routinely achieve the desired resolution ( $\sim 1\text{-}50\text{ nm}$ ) for characterization [16]. Electrons however, have a wavelength dictated by [15]:

$$\lambda = \frac{h}{\sqrt{2m_0eE}} \quad (2.2)$$

Where  $h$  is Planck's constant,  $m_0$ ,  $e$  and  $E$  are the rest mass, charge and energy of an electron. In an electron microscope, electrons are accelerated to energies in the order of 1-100 keV, giving them wavelengths in the range from 1-100 pm ( $1\text{pm} = 10^{-12}\text{m}$ ), far smaller than the distances between atoms ( $\sim 0.5\text{ nm}$ ) [18]. Electron microscopes can therefore achieve a far lower theoretical diffraction limit and are in fact currently limited by the technological constraints of the electron lenses [15]. This high resolution has made electron microscopy a key part of investigating material microstructure and is compared to other methods in Fig 2.1 [8].

In order to obtain images using electrons, electron microscopes use magnetic lenses to focus a beam of high energy electrons onto a sample, and collect the assorted types of signals resulting from the interaction, see Fig 2.2.

The large number of different signals generated when the electron beam interacts with a sample, (depicted in Fig 2.3), can be used to perform a multitude of types of analysis [19]. A full discussion of the analysis methods at the disposal of electron microscopes is beyond the scope of this work and is well documented elsewhere [11; 15; 19; 20]. Instead, this discussion is limited to electron energy loss spectroscopy (EELS). EELS is an electron microscopy technique that analyzes the transmitted inelastically scattered electrons, Fig 2.3[11]. It is mainly an analytic technique, however it is also possible to perform imaging with EELS [21]. EELS consists of collecting electrons that have passed entirely through the sample and binning them according to how much energy each one has lost, resulting in a spectrum such as shown in Fig 2.4. The numerous distinct features arise from the various mechanisms through which beam electrons can lose energy in the sample. Each interaction mechanism

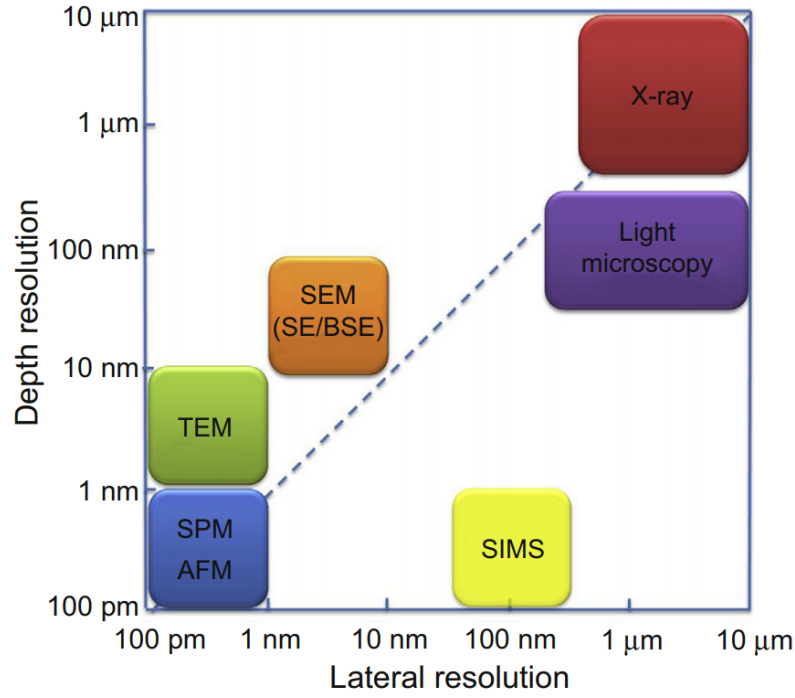


Figure 2.1: Resolution achievable by various techniques including Transmission and Scanning electron microscopy (TEM/SEM) and light microscopy, on a log-log scale. Taken from Inkson, 2016 [8].

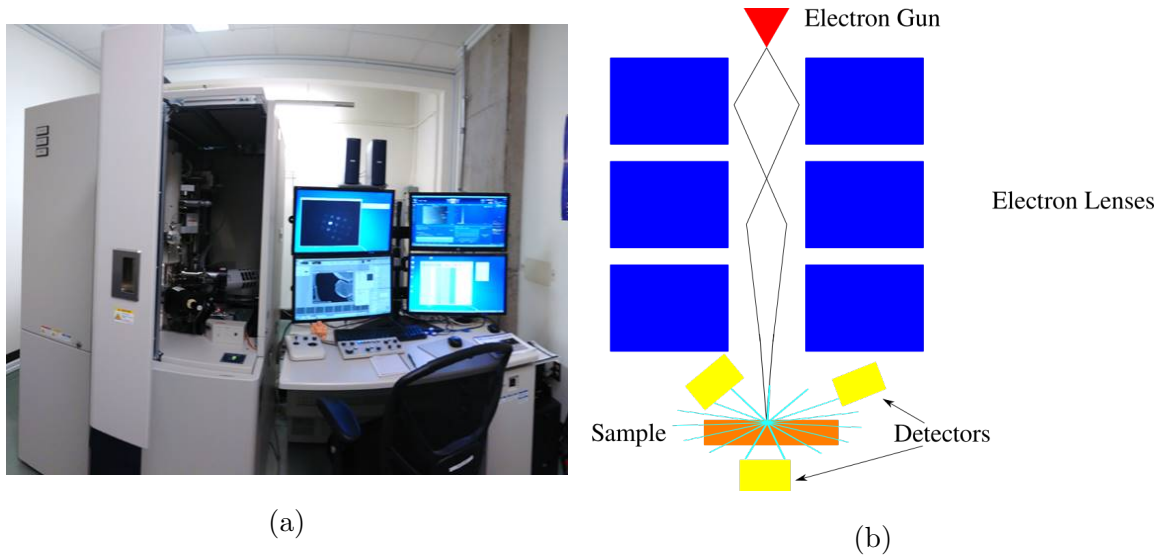


Figure 2.2: Example of an electron microscope (a) and working principles behind data acquisition (b) in an electron microscope.

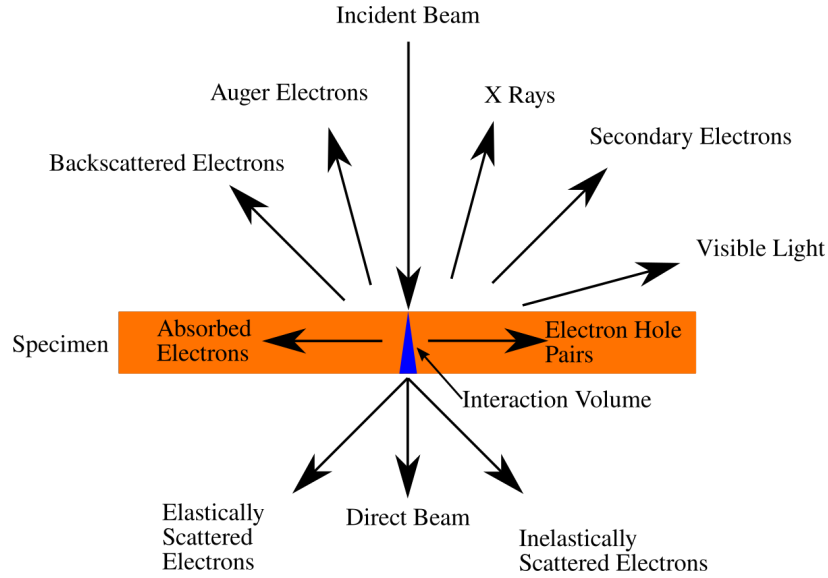


Figure 2.3: The numerous types of signals emitted when an electron beam encounters a sample in an electron microscope. Redrawn from Williams and Carter 2008 [19].

results in a particular feature in the spectrum, of which the main ones are described below:

- **Zero Loss Peak (ZLP):** The majority of the electrons in EELS pass through the specimen without experiencing an inelastic interaction, and retain their initial energy. The width of the ZLP defines the resolution of the spectrum and is due to energy spreading as the beam passes through the electron lenses [22]. For thin samples, the ZLP is also the most intense feature on a spectrum [11].
- **Background:** Beam electrons can excite loosely bound sample electrons close to the Fermi level into the unoccupied conduction band, see Fig 2.5. Due to the large number of possible transitions and the fact that high energy events are less favourable, this results in a smoothly decaying background [11].
- **Plasmon Peak:** The electron beam can excite multiple atoms in a solid collectively, creating a wavelike oscillation in the electron cloud of the solid [11]. These are called plasmon excitations and result in a peak appearing between 5eV-30eV [11]. The shape and intensity of the plasmon peak is dependent on the bond strength of the material and can be used to probe properties such as thickness and surface topology [23; 24].

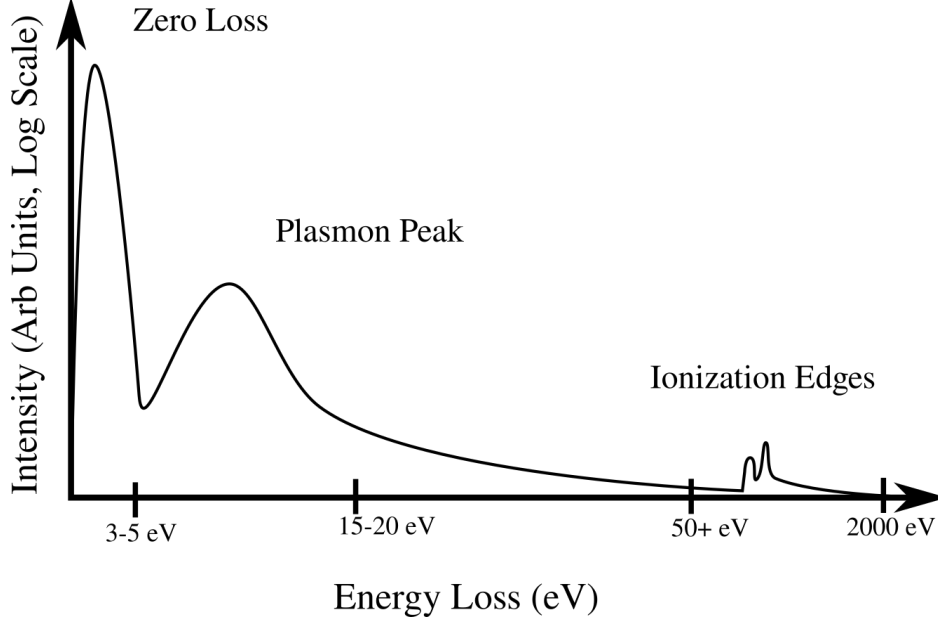


Figure 2.4: Sample EELS spectra identifying the main features, the zero loss peak, plasmon peak and ionization edges with fine structure. The intensities are on a log scale, and span approximately 6 orders of magnitude between the zero loss and the ionization edges.

- **Ionization Edges:** Beam electrons can excite core electrons in a sample to the conduction band, see Fig 2.5. Core states are largely isolated from their surroundings and have a consistent energy relative to the fermi level. As a result, the “edges” for each element will occur at specific energy locations, independent of sample, analogous to characteristic x-rays [11]. These can be used to determine sample composition [11].

The array of independent interaction mechanisms occurring in EELS opens the possibility of beam electrons undergoing multiple inelastic events in the sample, referred to as plural scattering. In order for meaningful data to be extracted from a spectra, plural scattering must be minimized [11]. This is achieved by using samples thinner or at least comparable to the path length of the beam electrons [11]. If samples are too thick, duplicate plasmon peaks appear which drown out the relatively weaker ionization edges, see Fig 2.6. Consequently, samples must be made thin enough to analyze the more sensitive parts of EELS spectra, amongst others near edge structure.

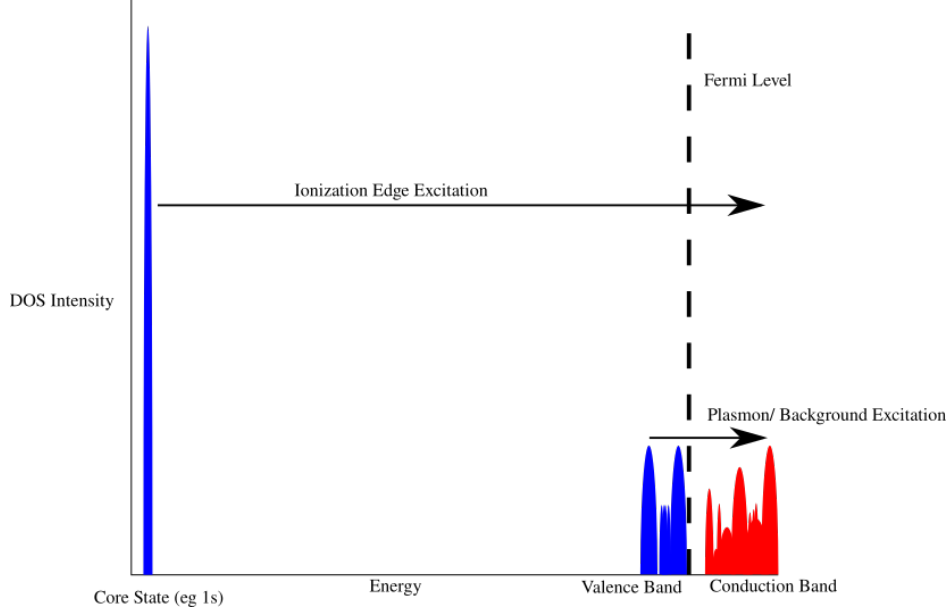


Figure 2.5: Schematic of excitation events leading to the features in an EELS spectrum.

### Near Edge Structure

Ionization edges in EELS possess features extending up to 50 eV beyond the onset of the edge, referred to as energy loss near edge structure (ELNES) [11]. These features are a reflection of the unoccupied states in the conduction band that represent the final states available to sample electrons, see Fig 2.5. The band structure of the conduction band is largely dependent on the local bonds of the atom in question. Because of this, ELNES can be used to investigate properties dependent on the local environment of each element. Properties include crystal structure, strain, identifying dopants, etc[25]. An example of using ELNES is in distinguishing different crystal structures of the same element; such as carbon in graphite vs diamond vs amorphous, see Fig 2.7 [26]. The large decay in intensity with increasing energy seen in Figure 2.4, limits the useful range of ionization edges to those less than  $\sim 2\text{keV}$  which corresponds to approximately the K edge of silicon ( $Z=14$ ) [27]. Heavier elements can be analyzed in EELS by investigating L and M edges. The relatively small intensity of ELNES makes their analysis highly dependent on the sample preparation and experimental



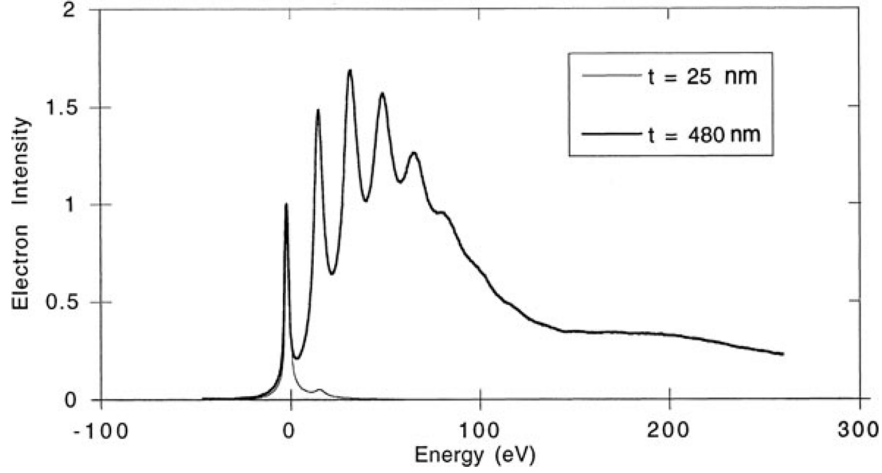


Figure 2.6: Two spectra demonstrating the importance of thin samples and single scattering events. In the thicker sample, plural scattering results in multiple evenly spaced plasmon peaks with intensities larger than the zero loss extending well past 100eV. The high background from the plasmon peaks and the thicker sample drown out any structure due to ionization edges [11]. Taken from Egerton, 2011 [11].

setup, which is discussed in the following section.

### 2.1.2 EELS in Experiment

In order to collect EELS spectra, electrons must pass entirely through the sample, making EELS a transmission electron microscope(TEM) technique[11]. In order to collect these transmitted electrons and divide them according to energy, a magnetic prism is placed below the specimen to redirect the electrons into a detector, Fig 2.8. Inside the magnetic prism, there is a  $\mathbf{B}$  field perpendicular to the beam direction which exposes the transmitted electrons to a Lorentz force (bold text indicates vector quantities) [28]:

$$\mathbf{F}_B = q(\mathbf{v} \times \mathbf{B}) \quad (2.3)$$

As the force varies according to the velocity of the electrons, the magnetic prism separates

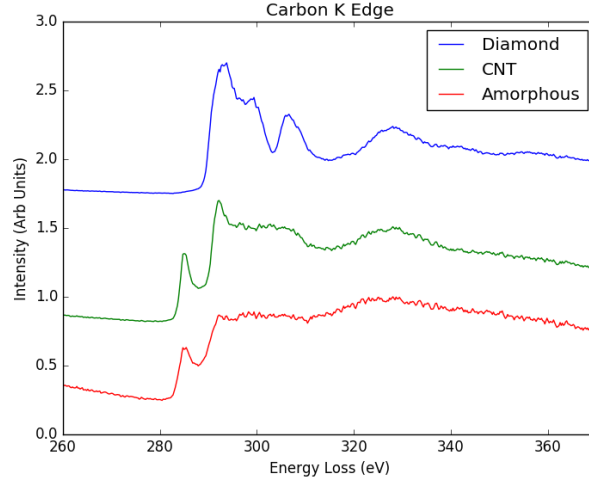


Figure 2.7: Carbon K edge taken at 30keV at McGill. The different crystal structures (diamond, carbon nanotube, and amorphous) result in distinctly different ELNES which can be used for identification. The spectra have separated with a vertical offset to facilitate comparison.

the electrons according to their energy:

$$\mathbf{F}_B = e(\mathbf{v} \times \mathbf{B}) = \frac{m\mathbf{v}^2}{\mathbf{r}} = \mathbf{F}_c \quad (2.4)$$

$$r = \frac{mv}{eB} = \frac{\sqrt{2mE}}{eB} \quad (2.5)$$

Where  $r$  is the radius of curvature, and  $E$  is the energy of each electron after passing through the sample. Spectra are obtained by mapping each location on the detector to a corresponding energy loss value. Images are produced by rastering the beam over the sample and using the intensities of a specific energy loss value to create an image.

The quality of EELS results depends numerous factors in the microscope. Foremost among these are properties of the electron beam. In order to obtain accurate results with regards to the finer features, the beam electrons must have very similar energies before striking the sample, within a range of a few eV. The larger this spread ( $\delta E$ ), the worse the energy resolution on the sample, which obscures features in ELNES. The energy spread

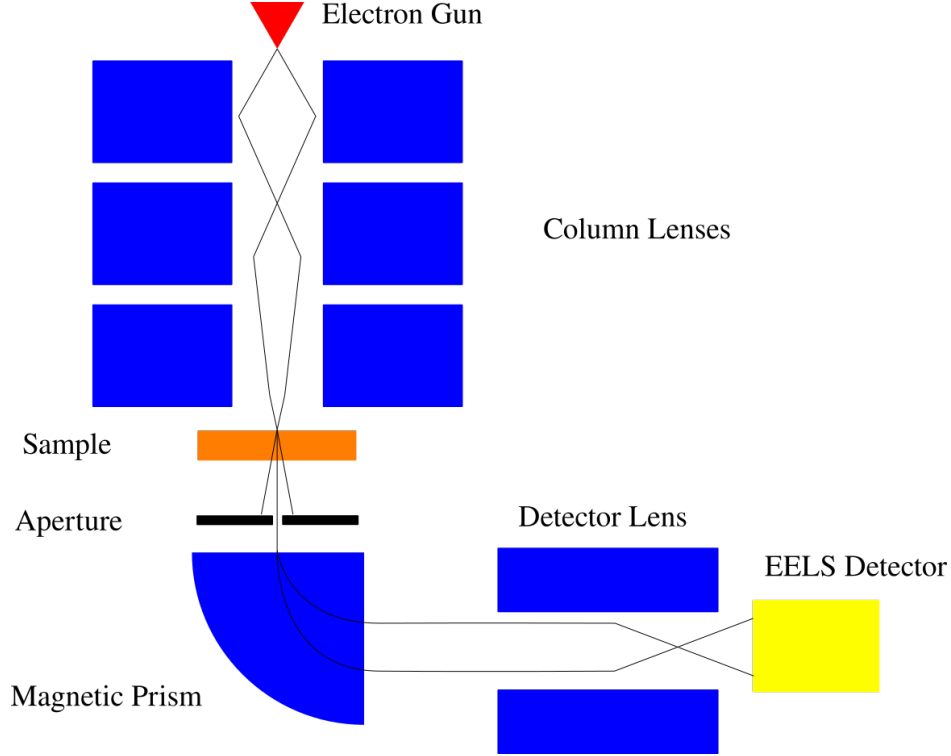


Figure 2.8: Experimental EELS setup, with the various magnetic lenses depicted in blue.

is dictated by the electron gun and lenses, with the optimal choice for EELS being a field emission gun ( $\delta E \sim 0.5 - 1\text{eV}$ ), as older style tungsten and  $\text{LaB}_6$  guns are unsuitable for EELS where  $\delta E > 2\text{eV}$  [27]. The energy resolution can be further improved to the order of  $\sim 10\text{meV}$  through the use of monochromators [29]. This improved energy resolution however comes at the cost of beam current which is another essential parameter for performing EELS. This is because sufficient signal needs to be collected to render the statistical  $\sqrt{N}$  noise small enough for features to become discernible. For high energy loss, introducing a monochromator can result in a trade off between experimental error from the beam and statistical errors due to lack of counts. Lower current also translates into longer acquisition times, which expose the sample to more beam damage. In addition to the beam properties, EELS results also depend largely on the imaging mode being used in the electron microscope as is discussed below.

## TEM vs SEM EELS

There are two main branches of electron microscopy: scanning electron microscopy (SEM) and transmission electron microscopy (TEM). TEM typically operates with beam energies between 100-300 keV designed to penetrate through thin samples, while SEM operates between 1-30 keV targeted towards analyzing bulk samples. Each method has its own advantages. The thin samples in TEM's result in a minimal interaction volume, far higher spatial resolution and have the ability to image individual atoms [9]. SEM's are optimized to scan the surfaces of samples and the large interaction volumes allow them to analyze bulk properties. SEM is also a more economical and flexible tool as it has far fewer sample requirements. EELS has been conventionally performed in TEM's as it requires the beam to pass through the sample and higher beam energies allow for thicker samples. Recent advances however have allowed EELS to be performed using an SEM with accelerating voltages of 30 keV [12]. As in a TEM, EELS in an SEM at 30keV requires thin samples, but offers the advantage of reducing the beam damage which has been essential for investigating lithium materials.

### 2.1.3 Beam Damage

As the various technological restraints of electron microscopes improve, the limiting factor in probing materials shifts increasingly towards dosage limits [27]. The various electron beam sample interactions that occur can damage materials in a multitude of ways. These can include, charging, heating, sputtering (mass loss) and crystal deformation [27]. The resulting damage impacts results, decreases signal, and limits sample use. Mass loss and crystal deformation are most relevant to EELS as they reduce signal and disrupt the local symmetry that is measured in the ELNES. These effects are caused largely by knock-on and radiolysis damage.

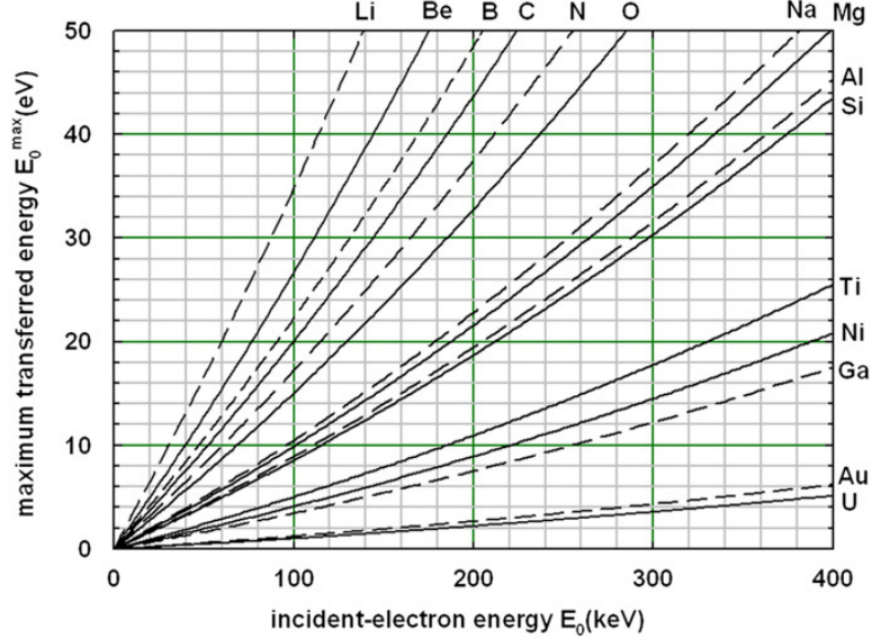


Figure 2.9: Plot relating  $E_{\max}$  to beam energy for a variety of elements, as calculated in Eq. 2.7. Taken from Egerton, 2010 [31].

### Knock On Damage

Knock on damage results from a beam electron transferring enough energy to a nucleus in the sample to displace it from its lattice site. The effect arises from high angle elastic scattering as the energy transferred for this interaction is defined by [30]:

$$E = E_{\max} \sin^2(\theta/2) \quad (2.6)$$

Where  $E_{\max}$  depends on the beam energy and the atomic mass, as:

$$E_{\max} \approx E_0(E_0 + 2M_0c^2)/(Mc^2) \quad (2.7)$$

Because  $E_{\max}$  is inversely proportional to atomic mass, lithium materials are particularly sensitive to knock on damage, see Fig 2.9. As can be seen in the plot, in TEM conditions (100+ keV),  $E_{\max}$  is considerable (30+ eV) for lithium, well above the energy required to cause lithium diffusion (  $\sim 10\text{eV}$ ) [6].

One means of reducing knock on damage is to perform EELS at lower operating voltages, which reduces  $E_{\text{max}}$  and the probability of displacing an atom. At these beam energies, it is possible to drop  $E_{\text{max}}$  below a threshold energy and eliminate knock on damage for heavier elements. However even at 30keV,  $E_{\text{max}}$  is large enough to damage lithium containing specimens [6].

## **Radiolysis**

Radiolysis refers to the breaking of atomic bonds, which ionizes atoms and results in diffusion and loss of crystal structure. Organic materials with low electron conductivity are highly susceptible to radiolysis, especially as it removes highly mobile hydrogen atoms from hydrocarbons. Metallic samples are less affected as the free electrons can screen the resulting charge discrepancies long enough for atoms to reform the bonds. Lithium materials are vulnerable to radiolysis due to their non conductive nature and lithium's high mobility. Particularly affected are strong insulators such as the lithium halogens [32]. In these materials, radiolysis forms F-centres and H-centres, separating the elements and allowing the halogens to diffuse from the material [32]. Radiolysis is dependent on temperature and using a cryogenic sample holder is one option of limiting this effect by impeding diffusion.

### **2.1.4 Lithium in EELS**

Lithium materials present a number of challenges to EELS analysis. Lithium ion battery materials are in general semiconductors with band gaps of varying sizes and high lithium conductivity. Both of these properties make these materials more vulnerable to beam damage. Lithium diffusion is particularly problematic because it requires only a small amount of energy ( $\sim 0.2 - 3\text{eV}$ ) to displace it through a crystal [33]. Lithium's sensitivity to the beam make EELS's short acquisition times, on the order of seconds, well suited for its analysis.

Beyond the experimental essentials, EELS analysis of lithium materials is complicated by lithium's only ionization edge being located around 55eV. 55eV is at the boundary of what

is considered reasonable for analysis as it lies close to the plasmon peak. The decay of the plasmon peak complicates background subtraction and makes it highly vulnerable to sample thickness and plural scattering. This energy range also often results in overlap between the lithium K edge and the  $M_{2/3}$  and  $M_4$  edges of transition metals. In particular, the edges of Mn, Fe and Ni, all fall between 40-70eV. As these elements are key components to cathode materials, they can require further steps for analysis to be possible.

### 2.1.5 Preprocessing

There are two key steps to be performed upon acquiring an ELNES spectra before it can be used for meaningful analysis, background subtraction and deconvolution.

#### Background Subtraction

The smooth decaying background in EELS spectra needs to be removed in order to isolate and analyze ELNES. However, the EELS background does not decay at a fixed rate and varies with energy and based on the presence of edges [34]. Consequently, it is not possible to fit a single function to an entire spectrum. Instead, the method of choice relies on fitting to a window directly before an ionization edge and refitting for each edge as needed. The most prevalent function used for this purpose is a power law decay [11]:

$$I_{bg} = AE^{-r} \quad (2.8)$$

Where  $E$  is the energy loss and  $A$  and  $r$  are fitting factors, typically determined through a least squares procedure [27]. This method has limitations due to different regions of the spectra decaying at different rates, with  $r$  ranging from 2 to 6.5 [27]. A fit must therefore be performed for every feature being analyzed in a spectrum [35; 36]. A downside of this method is the dependency on the size and location of the fitting window which results in instability in the fits, as shown in Fig 2.10. Difficulty in removing the background is further complicated in situations when edges overlap or when attempting quantitative analysis. Coupled with the instability of power law fitting, this has resulted in a number of alternate models, such

as polynomials, being proposed for specific cases. The power law method however, remains the most prevalent [35; 37].

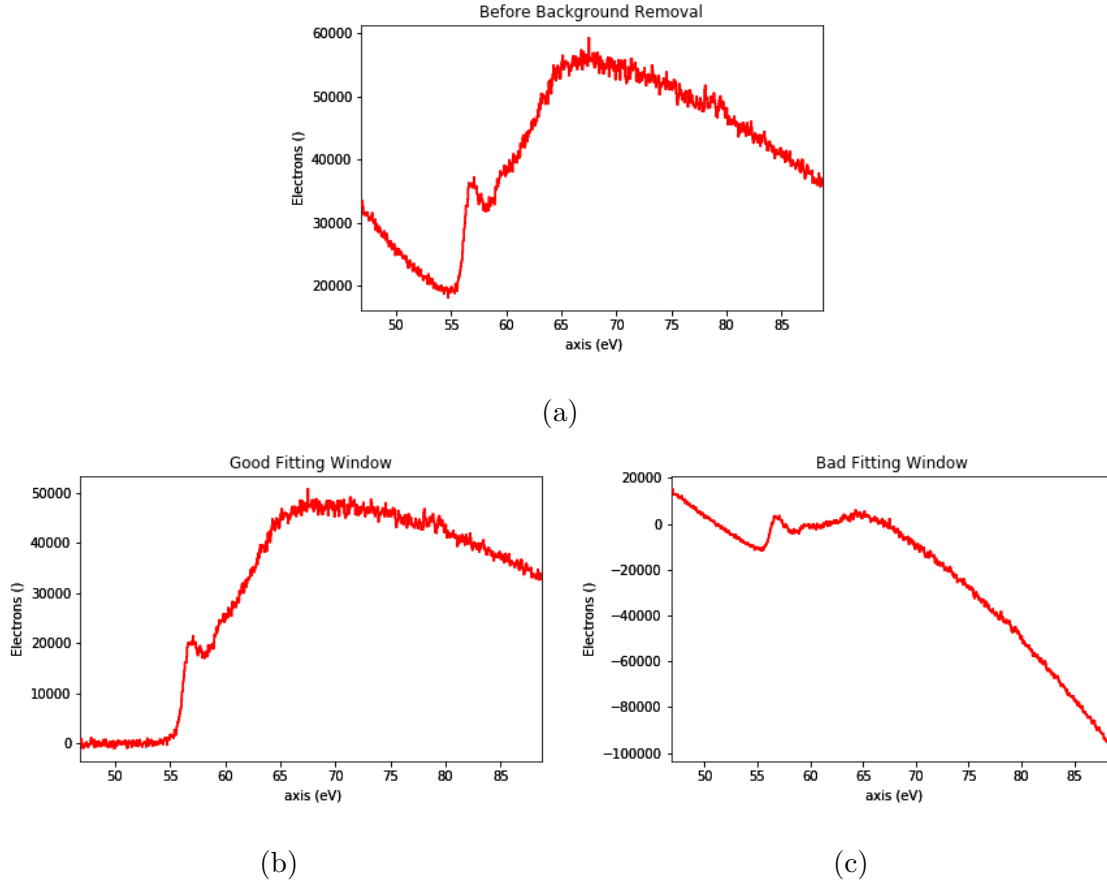


Figure 2.10: Results of power law background removal from raw spectrum (a) of metallic lithium K edge, using an appropriate (b) and inappropriate (c) window choices.

## Deconvolution

Despite significant improvements in experimental equipment, there is still a degree of energy spread on beam electrons, typically in the range of  $\sim 0.5$ -3 eV. This energy spread results in the observed ELNES on a spectra to be a convolution between the “actual” ELNES and the ZLP. Additionally, the probability of plural scattering must also be addressed, as the low loss region of the spectrum is convoluted into the output spectra. In order to recover the single scattering spectrum, the output must undergo deconvolution. A number of techniques



can be adopted for this purpose which can be split into either Fourier or Bayesian methods. Fourier techniques rely on describing the signal as a number of convolutions:

$$J(E) = Z(E) * [\delta(E) + \frac{S(E)}{I_0} + \frac{S(E) * S(E)}{2!I_0} + \dots] \quad (2.9)$$

Where  $\delta(E)$  is a delta function,  $J(E)$  is the obtained spectra,  $Z(E)$  is the zero loss peak,  $S(E)$  is the single scattering spectra, and  $I_0$  is the integrated intensity of the zero loss. The double scattering term is the convolution of the two single scattering terms, weighted by the decreased probability according to Poisson statistics. Taking a Fourier transform turns all of the convolutions into products (lower case indicates Fourier transform):

$$j(\nu) = z(\nu) \left( 1 + \frac{s(\nu)}{I_0} + \frac{s^2(\nu)}{2!I_0} + \frac{s^3(\nu)}{3!I_0} + \dots \right) \quad (2.10)$$

Which can in turn be collapsed into an exponential:

$$j(\nu) = z(\nu) \exp[s(\nu)/I_0] \quad (2.11)$$

This equation can then be solved for  $s(\nu)$  and reverse Fourier transformed to obtain the single scattering spectra [38]. In order to avoid amplifying the noise in the original spectra, represented by high frequency terms in Fourier space, the result must be broadened by a modifier. Thus, deconvolution can improve the energy resolution of the spectra only to a certain extent.

More recently, Bayesian methods have found success as well, in particular the Richardson-Lucy technique [39]. This technique is based on iterative methods initially developed in astronomy and used for the deconvolution of images, including those taken with the Hubble space telescope [40]. Similar to Fourier methods, the starting point is a convolution of the ideal spectra with the low loss, or point spread function ( $R(E)$ ):

$$J(E) = R(E) * S(E) \quad (2.12)$$

As an EELS spectra is inherently pixilated by the CCD, the convolution can be transformed into a sum, defining the observed intensity at a pixel based on the intensity of the surrounding pixels:

$$J(i) = \sum_j P(i, j) S(j) \quad (2.13)$$

Where  $P(i, j)$  defines how much the intensity at pixel  $j$  affects pixel  $i$ . From here, the Richardson-Lucy algorithm applies Poisson statistics and iteratively calculates the single scattering spectra as [39]:

$$S^{k+1}(j) = S^k(j) \left( \sum_i \frac{P(i, j) J(i)}{\sum_l P(i, l) S^k(l)} \right) / \left( \sum_i P(i, j) \right) \quad (2.14)$$

Where  $k$  is the iteration number. As with Fourier methods, the final spectra cannot gain any more information, and excessively increasing iterations results in increased noise and artifacts, this effect is demonstrated in Fig 2.11.

### 2.1.6 Other Experimental Techniques

EELS is not the only experimental technique available for the analysis of material microstructure, nor is it the only electron microscopy technique available for the task. Other techniques capable of obtaining comparable results to EELS include x-ray based analysis such as x-ray absorption spectroscopy and energy dispersive spectroscopy. The following paragraphs briefly describe these methods and compare them to EELS.

#### X-ray Absorption Spectroscopy (XAS)

XAS operates on a similar principle to EELS. However, instead of probing the sample with an electron probe, a beam of x-rays is directed through the sample and like EELS the resulting energy losses in the output spectrum are binned [41]. This difference in probe type does not effect the measured quantity which is the same as in EELS: the unoccupied density of states of the material [41]. Because of their similarities, parallels have been drawn between EELS

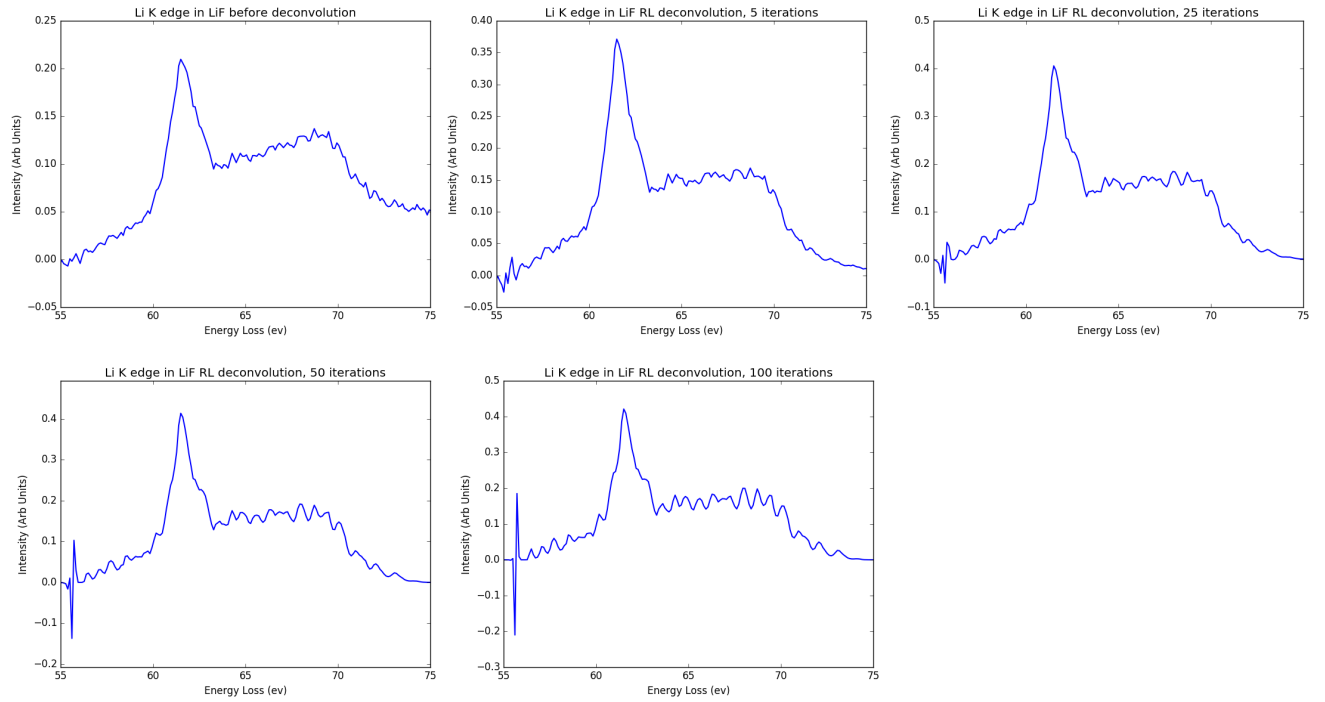


Figure 2.11: Effect of increasing iterations in Richardson-Lucy Algorithm. Iterations increase left to right, starting from the unprocessed background removed spectra on the top left, followed by 5, 25, 50, 100 iterations of deconvolution applied.

and XAS when developing theories. XAS however is typically used to measure far larger energy losses ( $> 5$  keV) and consequently has limited applicability to lithium [42]. The most significant benefit of XAS is its superior energy resolution ( $\sim 0.1$  eV) when compared to EELS ( $\sim 1$  eV) allowing for more features in near edge structures to be identified [11; 41]. This benefit comes at a cost however, XAS needs to be performed in a synchrotron, making it far more costly and less accessible to perform than EELS.

### **Energy Dispersive Spectroscopy (EDS)**

EDS is another form of analytic spectroscopy performed in electron microscopy. Unlike EELS and XAS which measure the unoccupied density of states, EDS measures the occupied DOS [15]. Like EELS, EDS probes the sample with an electron beam, but then collects the emitted x-rays produced when the sample electrons return to their relaxed states following excitation. These x-rays have the same characteristic energies as in EELS, but lack the resolution to distinguish fine structure. As such, it is limited to providing only composition information on samples. The benefit of EDS is less strict sample requirements as it does not require the thin samples needed by EELS and can therefore be used to analyze both bulk and microscale features in samples [15].

## **2.2 Density Functional Theory (DFT)**

Many of the results from EELS have non-intuitive interpretations, particularly in the case of ELNES which relies primarily on qualitative comparisons between measured and database spectra. Consequently, new materials require theoretical support to analyze results. This support often comes from *ab initio* calculations, such as density functional theory (DFT). This section describes the basis of DFT and its various implementations, as well as the peculiarities of simulating lithium materials.

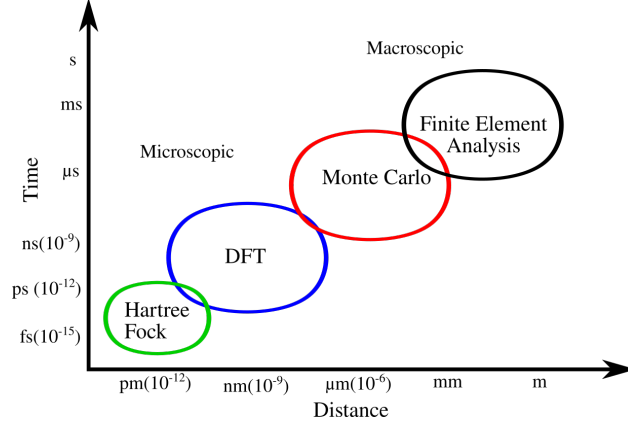


Figure 2.12: Various methods available to compute material properties and their corresponding regions of use.

### 2.2.1 DFT Background

DFT is an *ab initio* method that requires only atomic positions as input and is independent of experimental support. By solving a modified version of the Schrodinger equation, it is possible to obtain the ground state energy of the system, and from there determine a range of properties, including EELS spectra. This almost direct treatment of quantum mechanics makes DFT one of the most accurate techniques of first principle simulations. However, the quadratic to cubic scaling of the method with the number of electrons, limits its applicability to small scale systems, typical size limitations shown in Fig 2.12. DFT's accuracy and flexibility have resulted in the development of a large number (90+) of codes, both open source and commercial [43].

### 2.2.2 Formulation

DFT is centred on solving the many bodied Schrodinger equation [44]. The quantity in question is a solution for  $\psi_i$ , the electron wavefunctions from which observable properties can be calculated:

$$-\frac{\hbar^2}{2} \sum_i^N \frac{\nabla^2 \psi_i}{m_i} + \sum_i^N V(\mathbf{r}_i) \psi_i = E \psi \quad (2.15)$$

In this case, the non-relativistic, spin independent, time independent case is considered, although more in-depth derivations can be found elsewhere [45]. The Born Oppenheimer approximation is now applied, which assumes that the nuclei can be separated from the electrons and will act classically. The validity of this assumption stems from the fact that nuclei are over 1000 times more massive than electrons [46]. Applying the Born Oppenheimer approximation results in only needing to solve for the  $\psi$  of electrons and allows the potential to be broken up:

$$\left[ \frac{-\hbar^2}{2m_e} \sum_i^N \nabla^2 + \sum_i^N V(\mathbf{r}_i) + \sum_i^N \sum_{j<i}^N U(\mathbf{r}_i, \mathbf{r}_j) \right] \psi_i(\mathbf{r}_i) = E\psi_i \quad (2.16)$$

Where  $m_e$  is the mass of an electron,  $N$  is the number of electrons, and  $\mathbf{r}_i$  is a position vector. The terms inside the square brackets are collectively known as the Hamiltonian and are respectively: the kinetic energy of all the electrons, the Coulomb interaction between the electrons and the nuclei, and the electron-electron Coulomb interaction [44]. At this point, the equations are still too unwieldy to solve, depending on  $3N$  variables (the position coordinates of each wavefunction), not to mention the many body problem lurking inside the double sum. Facing this conundrum, the Hohenberg-Kohn Theorems are applied which postulate that [47]:

- The ground state *energy* of the system is a unique functional of the ground state *electron density*.
- The electron density which minimizes the overall energy corresponds to the real ground state electron density.

By changing the variables being solved for to the *density* and not wavefunctions, the problem is reduced down to only three variables: the three coordinates of the density field. The Hohenberg-Kohn theorems indicate that the observables can all be made into functionals of electron density and that any density other than the groundstate will result in a higher energy in the system [48]. The term functional is defined as an object that acts similar to a function, except that it takes other functions as input instead of variables, eg:

$$F[f(x)] = \int f(x)dx \quad (2.17)$$

In DFT, the relevant functional is the energy which is a functional of the density:  $E[n(\mathbf{r})]$ . Using the Hohenberg-Kohn theorems, it is possible to work towards a more manageable equation for energy as a functional of density by breaking down the potentials:

$$-\frac{\hbar}{2m_e} \sum_i \int \psi_i^* \nabla^2 \psi_i d^3r + \int V(\mathbf{r})n(\mathbf{r})d^3r + \frac{e^2}{2} \int \int \frac{n(\mathbf{r})n(\mathbf{r}')}{|\mathbf{r} - \mathbf{r}'|} d^3r d^3r' + E_{\text{nuclei}} + E_{\text{XC}} = E[n(\mathbf{r})] \quad (2.18)$$

Where the second term is the energy from the electron density-nuclei interaction, the third term is the electron density-electron density Coulomb interaction and  $E_{\text{nuclei}}$  is the contribution from nucleus-nucleus interaction. The final term,  $E_{\text{XC}}$  is the exchange and correlation term, where all of the quantum features of the electrons are grouped the result of basing the analysis in terms of density. This equation cannot be directly solved from first principles by itself as a means is needed to obtain the electron density. On this front, the Kohn-Sham equations are introduced, which assume that the electrons can be decoupled into single particle equations:

$$\left[ T_i + V(\mathbf{r}) + V_{\text{H}}(\mathbf{r}) + V_{\text{XC}}(\mathbf{r}) \right] \phi_i(\mathbf{r}) = \epsilon_i \phi_i(\mathbf{r}) \quad (2.19)$$

Where  $\phi_i$  and  $\epsilon_i$  are the Kohn sham wavefunctions and eigenvalues respectively and  $V_{\text{H}}$  is the Hartree potential or:

$$V_{\text{H}} = e^2 \int \frac{n(\mathbf{r}')}{|\mathbf{r} - \mathbf{r}'|} d^3r' \quad (2.20)$$

The Hartree potential represents the interaction of the electron in question (the one at  $\mathbf{r}$ , not  $\mathbf{r}'$ ) and all the electrons in the sample. This results in some interaction between the electron and itself, a term that must be corrected for in the  $V_{\text{XC}}$  term. The Kohn-Sham equations can be readily solved, but require the density to calculate the Hartree potential. The density is in turn obtained from the wavefunctions:

$$n_{\text{KS}}(\mathbf{r}) = 2 \sum_i \phi_i^* \phi_i \quad (2.21)$$

Where the factor of two is to account for electron spin. As the density is needed to calculate the wavefunctions and vice versa, a self consistent approach must be taken in order to obtain a valid result:

1. Assume a starting density
2. Use the initial density to calculate the Hartree potential and use it to solve the Kohn-Sham equations for the wavefunctions
3. Calculate a new density using Eq. 2.21.
4. Compare the new density to the initial and update the initial density.
5. Repeat steps 2-4 until the density converges and the energy is minimized. This density then represents the groundstate for the system.

This method is the starting point for DFT calculations, from which there are a number of variations with regarding how to proceed with these steps. Amongst these, the treatment of the exchange-correlation potential and choice of basis for the wavefunctions separate the various methods common in DFT packages.

## **Exchange-Correlation Potential**

The exchange-correlation potential was introduced above, but not explicitly defined. That is because there no easily solvable form, for this term as it collects all of the unknown attributes not accounted for in the Kohn-Sham equations. These include accounting for electron's being indistinguishable, the self interaction term, etc. There have been a number of proposed potentials, many designed for specific situations the most common of which will be discussed here. Like the potentials in the Kohn-Sham equations, the XC potential is defined as a functional of density. The various potentials vary according to accuracy and computational cost. The first attempt, originally proposed by Kohn and Sham in 1965 was the local density approximation (LDA) in which the exchange and correlation potential depends only on the density [49; 50]:



$$E_{\text{XC}}[n(\mathbf{r})] = \int n(\mathbf{r})\epsilon_{\text{XC}}[n(\mathbf{r})]d^3r \quad (2.22)$$

LDA is exact in the case of a free electron gas and has obtained good success when applied to metallic solids. By also considering the gradient of the density, a more involved potential is obtained, called the generalized gradient approximation (GGA) [49; 51] :

$$E_{\text{XC}}[n(\mathbf{r})] = \int n(\mathbf{r})\epsilon_{\text{XC}}[n(\mathbf{r}), \nabla n[\mathbf{r}]]d^3r \quad (2.23)$$

Other parameters can also be taken into consideration, such as the potential energy (meta GGA), empirical factors, or mixing with the exact Hartree-Fock (hybrid functionals) [49; 52]. Depending on the desired property and available computing power, an appropriate functional must be chosen for each case.

## Basis Sets

A second defining feature for various DFT methods is the choice of basis set for the wavefunctions,  $\phi_i$ . A number of options have become prevalent in the available programs. These are divided into two distinct types, localized and periodic [44]. Localized basis sets rely on using orthogonal functions which decay rapidly away from the origin [44]. An example is Gaussian peaks, as is used in the Gaussian16 software package [53]. The very localized basis set is useful for handling single, isolated molecules, which is ideally suited applications in quantum chemistry and biology. Poor scaling with electron number (typically  $N^3$  or worse) limits the maximal size of system that can be studied [54]. In materials science, a typical system of interest is a bulk material and thus unsuitable for this approach. To handle these cases, periodic basis sets are used, by defining a unit cell and repeating it infinitely in all directions. The solution to the Schrödinger equation under these periodic boundary conditions is given by Bloch waves, defined as [55]:

$$\psi = u(\mathbf{r})e^{i\cdot\mathbf{k}} \quad (2.24)$$

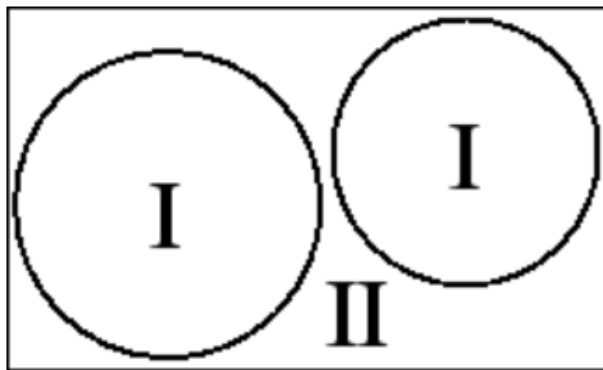


Figure 2.13: The two regions in an augmented plane wave approach. (I) Atomic Basins modelled with Pseudopotentials or atomic orbitals and (II) interstitial space modelled with a plane wave basis set. Taken from Schwarz, 2002 [58].

Consequently, a natural basis choice for periodic boundary situations are plane waves, which are used in a number of DFT packages including VASP, Quantum Espresso, and WIEN2k [56–58]. The periodic boundary method allows for accurate calculation of infinite samples, representative of bulk materials. The computational limits then apply to the size of the unit cell, typically limited to at most a few hundred atoms [54]. These limits render features such as defects and grain boundaries computationally expensive as they must be contained in a cell large enough to isolate them from their repeated images in adjacent cells. As large numbers of plane waves would be required to handle the fine features in the electron density close to nuclei, often an augmented plane wave (APW) technique is used. APW lowers the computational cost by dividing the unit cell into two regions: interstitial space and atomic basins (sometimes referred to as muffin tins), illustrated in Fig 2.13 [58].

The ability to divide electrons into two groups is valid as the core electrons surrounding each atom are largely isolated from the local environment by the outer shells [58]. The choice of which basis set is used inside the muffin tins provides additional options distinguishing DFT codes. One option is pseudopotentials, which are pre-generated densities for each element and can be varied to match the plane waves at the boundary [59]. The pseudopotential method is used in programs such as VASP and Quantum Espresso [56; 57]. Alternatively,

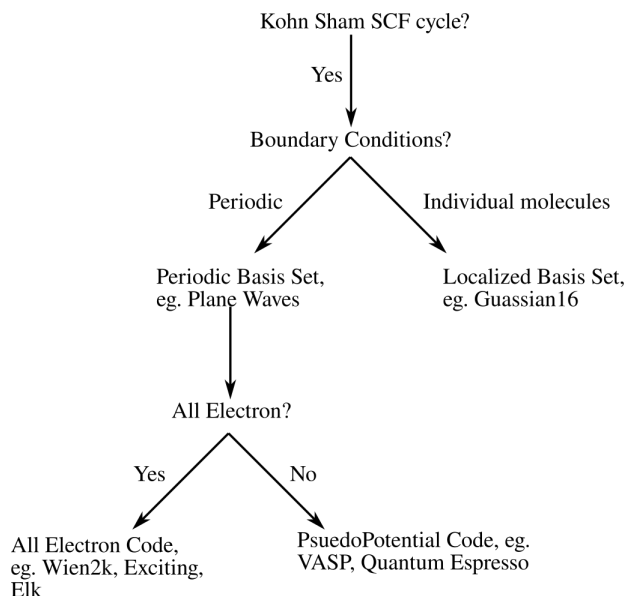


Figure 2.14: Flowchart depicting the various choices of basis set available to DFT codes.

spherical harmonics corresponding to the atomic orbitals can be used for increased accuracy [55]. This type of DFT is referred to as all-electron or full potential, as every electron is represented in the basis set, unlike the pseudopotential method where core electrons are absorbed into the pre-calculated pseudopotential [58]. Fitting for all of the electrons in the sample comes at a computational cost, yet allows for more accurate analysis of the properties dependent on core states, such as ELNES spectra in EELS.

A flowchart demonstrating the various properties of some common DFT codes is illustrated in Fig 2.14. The DFT code used primarily in this work is WIEN2k and is presented in the following section.

### 2.2.3 WIEN2k

WIEN2k is an all electron code that uses a linearized augmented plane wave (LAPW) formulation, combining plane waves with spherical harmonics illustrated in Fig 2.13 [58]. In WIEN2k's standard formalism, the basis sets for the Kohn-Sham wavefunctions can be represented as:

$$\phi_{\mathbf{k}_n} = \begin{cases} \Sigma_{lm}[A_{lm,\mathbf{k}_n}u_l(r, E_l) + B_{lm,\mathbf{k}_n}\dot{u}_l(r, E_l)]Y_{lm}(\hat{\mathbf{r}}) & r \leq r_{\text{RMT}} \\ \frac{1}{\sqrt{\omega}}e^{i\mathbf{k}_n \cdot \mathbf{r}} & r > r_{\text{RMT}} \end{cases} \quad (2.25)$$

Where  $n$ ,  $l$ , and  $m$  are the principle, azimuthal and magnetic quantum numbers respectively,  $Y_{lm}(\hat{\mathbf{r}})$  are the spherical harmonics and  $u_l(r, E_l)$  are the solutions to the radial Schrödinger equation. The coefficients  $A_{lm,\mathbf{k}_n}$  and  $B_{lm,\mathbf{k}_n}$  are set to match the value and slope of the plane waves at the boundary [58]. The use of an all electron code is essential for computing EELS accurately as it allows for a more flexible treatment of the core electrons not granted in pseudopotential codes.

## 2.2.4 Quantum Theory of Atoms in Molecules

Before continuing to the application of DFT to EELS, a more direct application of DFT is briefly presented: defining atoms and bonds from the electron density. Initial work on this front was performed by Bader, resulting in the field sometimes being referred to as Bader Theory [60]. The electron density can be divided into regions, with each atomic basin delimited by surfaces satisfying [61]:

$$\nabla\rho(\mathbf{r}) \cdot \mathbf{n}(\mathbf{r}) = 0 \quad \forall \mathbf{r} \in S(\Omega, \mathbf{r}) \quad (2.26)$$

That is, surfaces with no flux of electron density through them which can be pictured as a “valleys” in the electron density “landscape,” see Fig 2.15. In order to rapidly calculate the location of these surfaces, critical points in the density field are located, satisfying  $\nabla\rho(\mathbf{r}) = 0$ . These critical points will always satisfy Eq. 2.26. With the exception of critical points at maximas in  $\rho(\mathbf{r})$  which are located at nuclei, all of the critical points lie on interatomic surfaces [62]. The nature of the critical points can then be evaluated (minima, first or second order saddle point), and the location of bonds which are centred on first order saddle point critical points, can be determined [62]. The bonds can then be characterized to provide first principles chemical bonding analysis for quantum chemistry [63].

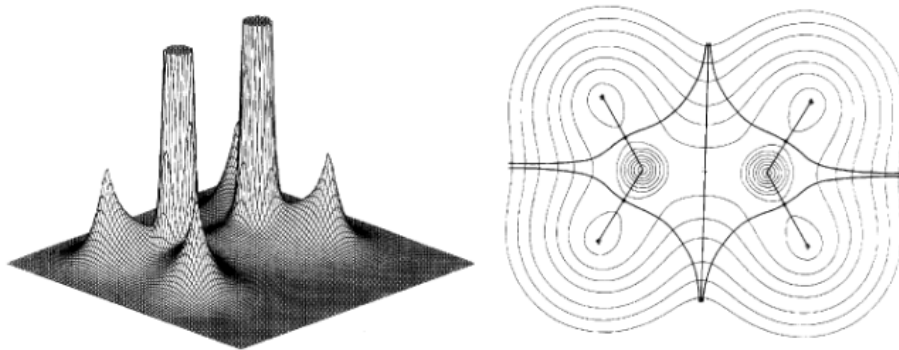


Figure 2.15: Density plot (left) and identification of atomic basin (right) in a diborane molecule. From Bader, 1998 [60].

### 2.2.5 Lithium in DFT

Lithium’s low atomic number requires a number of special treatments in DFT. These are mainly due to its loosely bound electrons with large orbitals resulting from lithium’s small nuclear charge. Even the 1s level electrons in lithium can have orbitals extending well past 2.5 Bohr from the nuclei, far further than in heavier elements, see Fig 2.16 where a range of orbital sizes are compared [13]. This results in a number of issues. One of these is that it is difficult and sometimes impossible to set the atomic sphere radii large enough to contain all these 1s core electrons. As atomic spheres cannot overlap, they are typically limited to  $\sim 2.0$  Bohr. Depending on the compound, the sphere size can be further constrained as all the spheres must be roughly the same size (within 30%) [58]. If the sphere sizes are too varied, convergence time and accuracy can deteriorate dramatically. The alternative to large sphere size is to allow a degree ( $\sim 0.5\%$ ) of core leakage into the calculation [58]. The downside to allowing leakage is that it may result in non physical effects at later stages in the calculation, or in the appearance of “ghostbands” in the calculation [58].

## 2.3 EELS Calculations

Having described the inner workings of EELS and DFT, the means to use the ground state density and the Kohn-sham wavefunctions and eigenvalues to calculate EELS spectra are

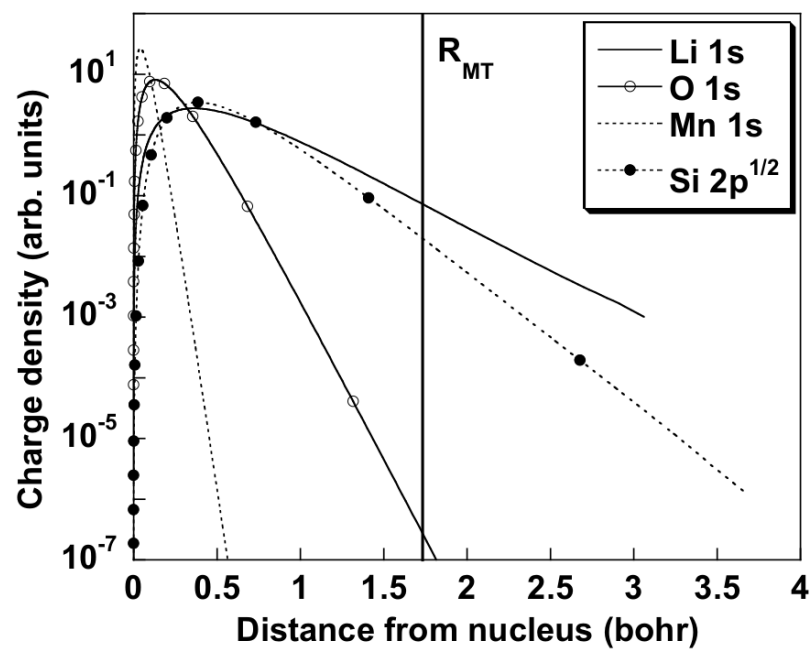


Figure 2.16: Orbital charge densities as a function of distance from nucleus, demonstrating the varying degrees of localization. From Mauchamp *et al*, 2006 [13]

discussed. Central to this challenge is the fact that DFT is a ground state theory; the Hohenberg Kohn theorems only guarantee that agreement between the calculation and reality for the lowest energy state [47]. As EELS inherently involves exciting an atom above its ground state, assumptions must be made to address this issue. The various approaches to the issue of handling excitations are defining attributes of the various techniques used to calculate EELS. Additionally, the varying requirements of the wide array of EELS spectra features further diversify the techniques. Broadly, there are three methods for calculating EELS: multiple scattering, atomic multiplet and band structure methods. A number of the band structure methods as well as their advantages and applicability are described below.

### 2.3.1 Time Dependent Density Functional Theory (TDDFT)

In TDDFT, the EELS spectrum is computed through the macroscopic dielectric function ( $\epsilon_M$ ). The method is centred on Fermi's Golden Rule, which is used to define matrix elements, which determine the probability of an electron being driven to a new state by a propagator. In EELS these matrix elements are calculated as:

$$M_{nm\mathbf{k}} = \langle n\mathbf{k} | e^{-i(\mathbf{q}+\mathbf{G})\mathbf{r}} | n'\mathbf{k}+\mathbf{q} \rangle \quad (2.27)$$

Where  $\mathbf{q}$  is the momentum transfer from the beam to the sample and  $\mathbf{G}$  is the Fourier coefficient of the probe. The initial and final states are the key parameters taken from DFT [64]. These matrix elements can be used to determine the independent particle polarizability  $\chi^{\text{KS}}$  [64]:

$$\chi_{\mathbf{G},\mathbf{G}'}^{\text{KS}}(\mathbf{q},\omega) = \frac{1}{V} \sum_{nm\mathbf{k}} \frac{f_{n\mathbf{k}} - f_{m\mathbf{k}+\mathbf{q}}}{\epsilon_{n\mathbf{k}} - \epsilon_{m\mathbf{k}+\mathbf{q}} + \omega + i\delta} M_{nm\mathbf{k}}(\mathbf{q},\mathbf{G}) M_{nm\mathbf{k}}^*(\mathbf{q},\mathbf{G}') \quad (2.28)$$

Where  $f_{n\mathbf{k}}$  is the fermi distribution and  $V$  is the volume of the cell.  $\chi^{\text{KS}}$  can be related to the reducible polarizability through the Dyson equation:

$$\chi = \chi_{\text{KS}} + \chi_{\text{KS}}(\nu + f_{\text{xc}})\chi \quad (2.29)$$

Where  $f_{xc}$  is the exchange and correlation potential. A common approximation is to set  $f_{xc}$  to zero, a method called the Random Phase Approximation (RPA) [65]. At this point two more approximations are introduced.  $\mathbf{q}$  is set to 0, referred to as the optical limit. This assumes that the momentum transfer to the sample is minimal, an approach that is valid for low energy losses ( $<50$  eV). Secondly the probe wavelength is assumed to be much larger than the resulting perturbations, ( $\mathbf{G} \rightarrow 0$ ). This is known as ignoring local field effects. Both approximations can be relaxed on a case by case basis, at increased computational expense [64]. With these approximations, first element of the dielectric tensor can be calculated as:

$$\epsilon_{00}^{-1}(\mathbf{q}, \omega) = 1 + v\chi \quad (2.30)$$

from which the macroscopic dielectric function can be obtained, which relates to the energy loss function ( $L(\mathbf{q}, \omega)$ ):

$$[\epsilon_M(\mathbf{q}, \omega)]^{-1} = \epsilon_{00}^{-1}(\mathbf{q}, \omega) \quad (2.31)$$

$$L(\mathbf{q}, \omega) = -\text{Im}[\epsilon_M(\mathbf{q}, \omega)]^{-1} \quad (2.32)$$

The energy loss function is what is directly measured by EELS and is the standard of comparison for TDDFT. TDDFT is accurate for low losses, so ideal for calculations of plasmons, and in the limit of the optical approximation low energy M edges of transition metals and the lithium K edge [14]. Limitations of the approach are that it is based on the final state rule, and is consequently susceptible to excitonic effects in  $\langle f |$ . Additionally, local field effects can require subtle interpretations and may require additional computational cost [14]. TDDFT is also applicable to x-ray absorption spectroscopy where the optical limit is more valid. The only required modification to the theory is replacing the propagator in Eq. 2.27 by the appropriate x-ray propagator [66]:

$$e^{i\mathbf{q}\cdot\mathbf{r}} \rightarrow e^{i\mathbf{k}\cdot\mathbf{r}} \epsilon \cdot \mathbf{r} \quad (2.33)$$



### 2.3.2 Cross Section Approach

TDDFT is a suitable choice for low loss EELS. For higher energy ionization edges with non-negligible momentum transfer, Fermi's Golden Rule can be used to compute a double differential cross section instead of the dielectric function. The differentials are with respect to energy and scattering angle, the two relevant parameters in an EELS experiment. The relationship is given by [67]:

$$\frac{\partial^2 \sigma}{\partial \Omega \partial E} = \left[ \frac{4\gamma^2}{a_0^2 q^4} \right] \frac{k_f}{k_i} \sum_{i,f} |\langle f | e^{i\mathbf{q}\cdot\mathbf{r}} | i \rangle|^2 \delta(E - E_f + E_i) \quad (2.34)$$

Where  $a_0$  is the Bohr radius,  $E$  the energy loss and  $\gamma = \sqrt{1 - \beta^2}$ , the relativistic factor. As in TDDFT, the approach can be modified to solve for XAS, by replacing the Rutherford cross section with the Thompson cross section in the prefactor and changing the propagator according to Eq. 2.33.

The cross section formalism can be modified to account for anisotropic samples as well as some experimental parameters [67]. Similar to TDDFT, the essential parameters are the initial and final states, taken from DFT ( $\langle f |$  and  $| i \rangle$ ). The simpler approach with fewer approximations can be attributed to the states being investigated: in low loss EELS, both the initial and final states depend heavily on the band structure, whereas for core losses the initial states are relatively constant and well defined [67]. Cross section methods however still suffer from the limitations of a one particle final state rule approach and their lack of ability to deal with excitonic effects.

### 2.3.3 Beth Salpeter Equations (BSE)

The largest drawback of TDDFT and cross section calculations is the single particle formalism, which prevents proper treatment of excitonic effects. Solving the BSE is a two particle method that rigorously calculates the interaction between the excited electron and the resulting hole in the core state [68]. It is applicable to both low and core loss EELS

calculations [64]. The core of the BSE is in solving the eigenvalue problem involving the effective two particle Hamiltonian, in order to obtain an improved final state,  $\langle f |$  [69]:

$$\hat{H}_{\text{eff}} |A_\lambda\rangle = E_\lambda |A_\lambda\rangle \quad (2.35)$$

The effective Hamiltonian can be broken into three parts: the diagonal, exchange, and correlation components[69]. The diagonal component accounts for single particle transitions:

$$H_{v\mathbf{c}\mathbf{k},v'\mathbf{c}'\mathbf{k}'}^{(\text{diag})} = (\epsilon_{\mathbf{c}\mathbf{k}} - \epsilon_{v\mathbf{k}})\delta_{vv'}\delta_{cc'}\delta_{\mathbf{k}\mathbf{k}'} \quad (2.36)$$

The exchange component accounts for the repulsive interaction between the excited electron and its hole:

$$H_{v\mathbf{c}\mathbf{k},v'\mathbf{c}'\mathbf{k}'}^{(\text{x})} = \int d^3\mathbf{r} \int d^3\mathbf{r}' \varphi_{v\mathbf{k}}(\mathbf{r})\varphi_{\mathbf{c}\mathbf{k}}^*(\mathbf{r})\bar{v}(\mathbf{r},\mathbf{r}')\varphi_{v'\mathbf{k}'}^*(\mathbf{r}')\varphi_{\mathbf{c}'\mathbf{k}'}(\mathbf{r}') \quad (2.37)$$

Where  $\varphi$  are the single particle states of the hole and electron and  $\bar{v}$  is the unscreened Coulomb potential. Finally, the correlation component accounts for the attractive interaction between hole and electron:

$$H_{v\mathbf{c}\mathbf{k},v'\mathbf{c}'\mathbf{k}'}^{(\text{c})} = - \int d^3\mathbf{r} \int d^3\mathbf{r}' \varphi_{v\mathbf{k}}(\mathbf{r})\varphi_{\mathbf{c}\mathbf{k}}^*(\mathbf{r})W(\mathbf{r},\mathbf{r}')\varphi_{v'\mathbf{k}'}^*(\mathbf{r}')\varphi_{\mathbf{c}'\mathbf{k}'}(\mathbf{r}') \quad (2.38)$$

Where  $W$  is the screened Coulomb potential on the hole. By treating the hole created by the excited electron as a particle, solving the BSE produces superior results to single particle approaches, particularly in those with moderate screening [69]. However, this method is vastly more computationally demanding and can only be performed on the simplest of structures. This large computational trade off has led to the continued prevalence of single particle techniques.

### 2.3.4 Core Hole Approximations

The computational cost of the BSE method and the difficulties in handling excitonic effects in single particle approaches have resulted in additional approximations being made to improve single particle results. The most significant of these are related to treatment of the

core hole and subsequent shielding.

The need to include core hole effects was recognized in early attempts at calculating ELNES [70]. The initial solution was to replace the element in question with the next element on the periodic table, called the Z+1 approximation [70]. This method was effective on a selection of materials. However, it lacks the flexibility to handle excitations from different shells as is needed to differentiate between K,L, and M edge core holes. As a result, the Z+1 approximation has been largely replaced by the core hole approximation [67].

The core hole approximation involves manually decreasing the occupancy of a core orbital, and adding a charge to the background to conserve the electron number [58]. This allows for more flexibility than the Z+1 approximation although, effectiveness of the core hole approximation is also mixed. In some cases, including a core hole results in excellent agreement with experiment, whilst in others, ignoring a core hole produces more accurate results [67]. Additionally, many cases lie between these two extremes and are better modelled using a half core hole, a phenomena and solution initially identified by Luitz, 2001 [71]. Luitz also demonstrated that ELNES simulations could be “fit” to experiment by varying the magnitude of the core hole between zero and one [71]. The challenge in simulating ELNES of using the correct size of core hole, is currently managed by comparing various simulated spectra to experiment. In order to increase the predictability of simulations, several methods have been proposed.

Initial intuition regarding core hole shielding, dating back to the Z+1 method, was based on material properties: insulators require a hole and metals do not. The reasoning is that the high electron conductivity of metals allows free electrons to easily shield the positively charged core holes. The reasoning has been moderately successful in predicting whether a full or no core hole will be more accurate, and is still cited currently. Numerous exceptions (copper requires a hole,  $\text{TiO}_2$  does not) have led to more further investigation [71–74]. The

impact of core hole effects has been related to the electronegativity of the atom in question by Gao *et al* 2008, [73]. Cations and elements with low electronegativity (eg. Lithium,) are predicted to be heavily impacted by the insertion of a core hole due to their inability to attract valence electrons to shield the hole [73]. The work however makes no comment regarding the necessity of a core hole, only how much it will effect each case. The issue of determining when a core hole is required can be resolved by investigating the density of states (DOS) [72].

There is a direct connection between the ELNES and the unoccupied DOS ( $\langle f|$ ) through Fermi's Golden Rule. As the core hole is isolated onto a single atom, the excited atom must make a sufficient contribution to the unoccupied DOS to actually manifest excitonic effects [72]. An example of this can be seen in lithium carbonate, where the unoccupied density of states is dominated by carbon and oxygen, Fig 2.17. Even if the lithium DOS are impacted by a core hole, the total DOS of the crystal will remain unchanged, and core hole effects will not be observed. In contrast, core hole effects are predicted to be present on carbon and oxygen edges as both of these elements contribute strongly to the conduction band in the DOS.

By analyzing the DOS, it is possible to predict whether or not a core hole is required on a given case. Considering the electronegativity of the elements involved can provide insight regarding the strength of excitonic effects. However, neither technique directly accounts for core hole screening which can obscure excitonic effects predicted in the DOS, in low electronegative elements (eg metallic lithium) [13]. The lack of a robust means of including core hole screening into calculations has led to the continued prevalence of comparing experiment to the better match between either a full or no hole spectrum. This state of development has remained unchanged for the past 30 years and consistently led to unsatisfactory results, Fig 2.18 [75–86].

The treatment of core holes is particularly relevant for lithium, the least electronegative

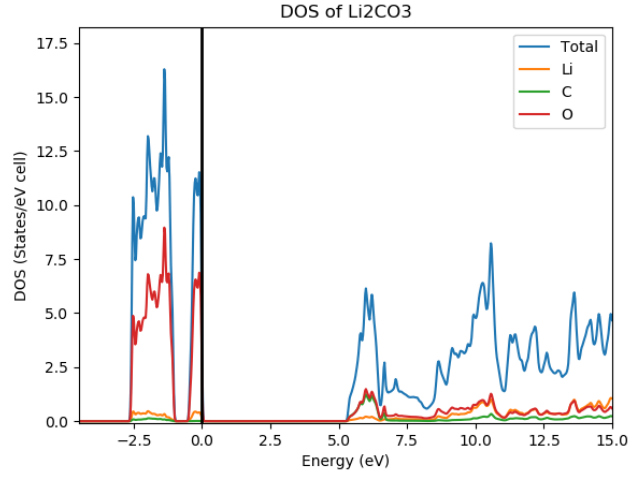


Figure 2.17: Density of State of  $\text{Li}_2\text{CO}_3$ . Note the minimal contribution of lithium to the conduction band at  $\sim 5\text{eV}$  relative to carbon and oxygen

element, which indicates strong excitonic effects and weak shielding. In order to calculate lithium ELNES, a more rigorous approach to core hole screening is required. Developing a deterministic method of introducing non-integer core holes is the focus of this work

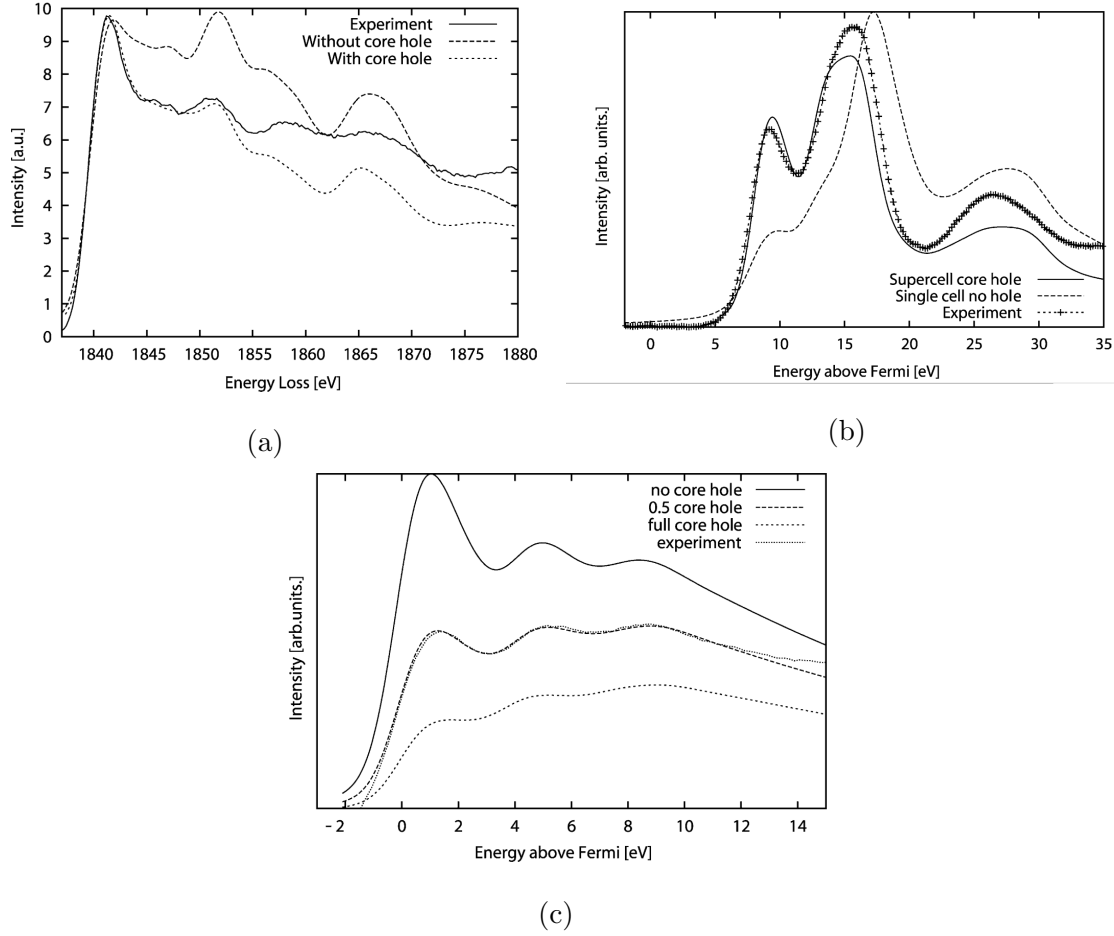


Figure 2.18: The three typical results of inserting a core hole. In (a) the core hole results in good agreement with experiment. In (b) and (c), the core hole overestimates the excitonic effects, resulting in errors in peak intensity. In (c), a fractional core hole is inserted resulting in good agreement at the cost of physicality. Results from Herbert *et al*, 2003 (a,b) and Luitz *et al*, 2001 (c)[71; 87] .

# Chapter 3

## Methods

The lack of flexibility and accuracy of the core hole approximation combined with the computational deterrent of solving the BSE presents a barrier to expanding EELS calculations. Lithium in particular, being highly sensitive to these effects requires an improved method to continue EELS studies. To address this, a means of calculating the core hole shielding effect in lithium is developed. It is based in the single particle approach so as to reduce computational effort and does not require any empirical results. In this chapter the formulation and implementation of this method is discussed as well as the calculation and experimental parameters used in this work.

### 3.1 Improvement to Core Hole Shielding Calculations

To improve ELNES simulations, the core hole shielding contribution must be calculated. To maintain a low computational cost, the method developed here is based on a single particle approach. In particular, the relativistic cross section method using the final state rule (Eq. 2.34) [88]:

$$\frac{\partial^2 \sigma}{\partial \Omega \partial E} = \left[ \frac{4\gamma^2}{a_0^2 q^4} \right] \frac{k_f}{k_i} \sum_{i,f} |\langle f | e^{i\mathbf{q}\cdot\mathbf{r}} | i \rangle|^2 \delta(E - E_f + E_i) \quad (3.1)$$

As mentioned in Section 2.3.4, shielding effects are contained in the  $\langle f |$  term. These

effects originate from changes in the Hamiltonian arising from the introduction of a core hole and manifest themselves when solving for  $\langle f |$  in the Kohn Sham equations (Eq. 2.19) [89]:

$$\left[ T_i + V_{\text{ext}}(\mathbf{r}) + V_{\text{H}}(\mathbf{r}) + V_{\text{XC}}(\mathbf{r}) \right] \phi_i(\mathbf{r}) = \epsilon_i \phi_i(\mathbf{r}) \quad (3.2)$$

The core hole alters the Hartree and the exchange and correlation potentials, and this effect is reduced somewhat by shielding. The total change in the potential due to introduction of a core hole can be expressed as:

$$\Delta V_{\text{tot}}(\mathbf{r}) = \Delta V_{\text{H}}(\mathbf{r}) + \Delta V_{\text{XC}}(\mathbf{r}) = V_{\text{CH}}(\mathbf{r}) - V_{\text{S}}(\mathbf{r}) \quad (3.3)$$

where  $V_{\text{CH}}(\mathbf{r})$  is the potential of a core hole and  $V_{\text{S}}(\mathbf{r})$  represents the shielding potential. The current convention in literature when performing core hole calculations is to ignore this shielding term, despite the large effects it has been shown to have on ELNES. The shielding potential can be divided into two parts, core electron shielding  $V_{\text{c}}(\mathbf{r})$  and valence electron shielding  $V_{\text{v}}(\mathbf{r})$ . Core shielding is due to electrons occupying core orbitals on the excited atom reducing how much the core hole can be “felt” outside of the atom. Valence screening is caused by valence and interstitial electrons being attracted to the positively charged hole. Neither of these terms are readily solvable for using current methods. When calculating ELNES for the lithium K edge, the core electron screening can be ignored. This assumption arises from lithium’s low electron count and simplifies the screening calculation considerably.

The valence electron screening can be calculated through linear response theory, as  $\Delta V_{\text{H}}(\mathbf{r})$  and  $\Delta V_{\text{XC}}(\mathbf{r})$  cannot be computed exactly [90]. Linear response theory relates changes in electron density to changes in potential, such as from the introduction of a core hole, as described by Shirley, Soininen and Rehr [90]:

$$\Delta n(\mathbf{r}) = \int d^3\mathbf{r}' \chi^0(\mathbf{r}, \mathbf{r}'; \omega = 0) \Delta V_{\text{tot}}(\mathbf{r}') \quad (3.4)$$

Where  $\chi^0$  is the irreducible polarization function, given by  $\chi^0(\mathbf{r}) = \delta n(\mathbf{r}) / \delta V(\mathbf{r})$ . At this



point, the screening is set to zero ( $V_S(\mathbf{r}) = 0$ ), to be reintroduced later as a perturbation. Restricting the region of interest to only the excited atom gives:

$$\Delta n_{\text{basin}} = \int_f d^3\mathbf{r} n_f(\mathbf{r}) - \int_i d^3\mathbf{r} n_i(\mathbf{r}) = -1 \quad (3.5)$$

Where the basin defining the integration limits is defined by Bader theory as described in Section 2.2.4. This equation indicates that, when there is no screening, the excited core electron has entirely left the basin, with no response from the material. Assuming the polarization is constant inside this basin, gives:

$$\frac{\Delta n_{\text{basin}}}{V_{\text{CH}}} = \chi_{\text{basin}}^0 = \frac{\Delta n_{\text{basin}}}{\Delta V_{\text{tot}}} \quad (3.6)$$

The second equality assumes the polarization is independent of changes in shielding potential. This is verified by checking that  $\Delta n_{\text{basin}}$  vs  $V_{\text{CH}}$  is linear, see Fig 3.1. The shielding term can then be reintroduced by perturbing the right hand side of Eq. 3.6 to obtain:

$$\frac{-1}{V_{\text{CH}}} = \frac{-1 + \delta n_{\text{basin}}}{V_{\text{CH}} - \delta V_v} \quad (3.7)$$

Which can be reduced to:

$$\frac{\delta V_v}{V_{\text{CH}}} = \delta n_{\text{basin}} \quad (3.8)$$

Equation 3.8 connects the screening due to valence electrons to a change in electron density, a rapidly calculable quantity. The screening potential is given in “units” of the core hole potential which allows the screening to be accounted for by modulating the occupancy of the core hole state. Additionally, while perturbed from the no screening case in Eq. 3.7, it should be noted that this argument holds when approached from the full screening case. This indicates that these approximations are valid over the entire range of screening cases ( $\delta V_v = 0 \rightarrow V_{\text{CH}}$ ). The implementation of this theory in EELS calculations is discussed below.

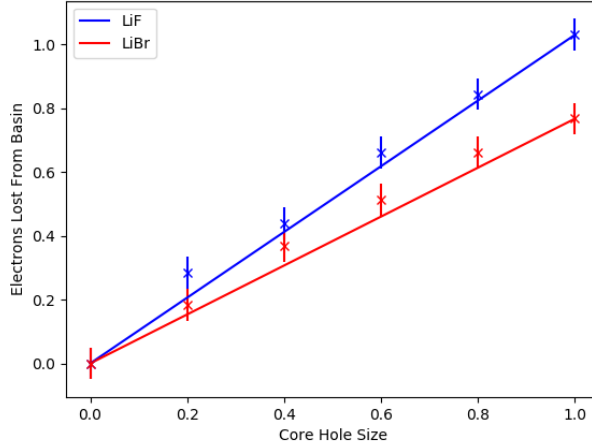


Figure 3.1: Effect of varying the core hole potential on atomic basin population, for LiF and LiBr. Solid lines represent the case of constant  $\chi_{\text{basin}}^0$

## 3.2 Implementation

To calculate and implement the shielding term in Eq. 3.8, a series of calculations are performed. First, a standard DFT calculation is executed with no core hole and the DOS is calculated to verify that a core hole is indeed necessary. If so, a full core hole is performed. Depending on cell size, the full core hole calculation is performed using a supercell so as to isolate individual core holes in the periodic boundaries. For both calculations, the electron occupancy inside the lithium atomic basin is calculated and used to calculate the screening potential according to Eq. 3.8. This returns a decimal value between 0 and 1 which is subtracted from the magnitude of the hole. A third calculation is then performed with using this non integer “shielded” hole, again using supercells as necessary.

## 3.3 Calculation Details

Before discussing specific cases, it should be noted that all calculations are run in a manner to account for the peculiarities of lithium in DFT. In particular, atomic sphere radii on the lithium are maximized to minimize core leakage and monopole effects are verified to be

negligible [13]. The standard DFT convergence tests (K points, RKmax) are performed and all cells are relaxed according to volume. All supercell calculations are performed using non conventional symmetries ( eg.  $P1$  ) so as to only produce a single core hole atom per cell and avoid any interaction between core holes. The final spectra are converged based on supercell size. Density calculations are performed using Critic2 [62]. Detailed calculation and crystal parameters can be found in Appendix A.

### 3.4 Experimental Details

All of the experimental results are obtained at McGill on a Hitachi SU9000 field emission SEM. EELS spectra are acquired at 30 keV to minimize the beam damage to the lithium materials. The energy resolution is measured on the ZLP as 0.7 eV. The collection angle and convergence angle are taken as 5.0 mrad and 1.8 mrad respectively. All spectra undergo background removal through a power law fit (see Section 2.1.5) and are deconvoluted using the Richardson-Lucy algorithm (also Section 2.1.5). Powdered LiF samples prepared by drop casting onto carbon grids. Metallic lithium spectra are collected from crystals that are observed to grow in the vicinity of the electron beam, as reported by Liu *et al.*, [32; 91].

# Chapter 4

## Results and Discussion

Having developed a method and the means to implement screening calculations, ELNES are calculated for three common lithium compounds with a variety of properties;  $\text{Li}_2\text{O}$ ,  $\text{LiF}$ , and metallic lithium. A mixed compound obtained after observing beam damage on  $\text{LiF}$  during a transformation into metallic lithium is also analyzed and discussed. Following results from the individual cases, the overall effectiveness and applicability of the method is discussed.

### 4.1 Lithium Oxide

$\text{Li}_2\text{O}$  is investigated and screening calculations are performed as described in Section 3.2. The DOS is calculated and demonstrates considerable lithium components in the unoccupied DOS suggesting that a core hole is necessary, Fig 4.1. The electron density around the excited lithium atom is plotted for each, before and after insertion of a core hole, see Fig 4.2.

The density plots show valence electrons in the material being attracted to the excited atom. This response in the electron density indicates that core hole screening should have a noticeable effect on the final states. Additionally, the closest unexcited lithium atom in the density plot is largely unaffected by the core hole, in agreement with the supercell size

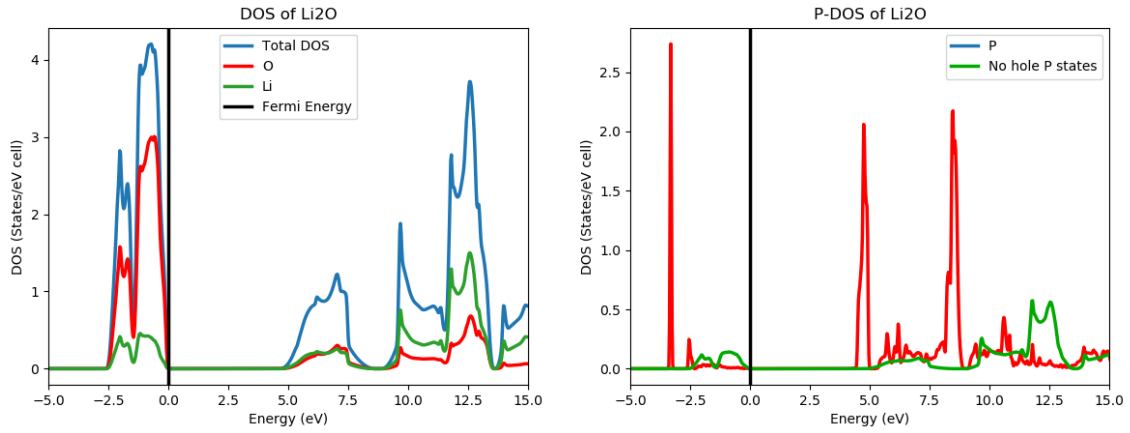


Figure 4.1: DOS for Li<sub>2</sub>O (left) and Lithium P states (right). Note the comparable Li vs O contributions in the unoccupied DOS around 5-7.5 eV, as well as the dramatic changes resulting from insertion of a core hole.

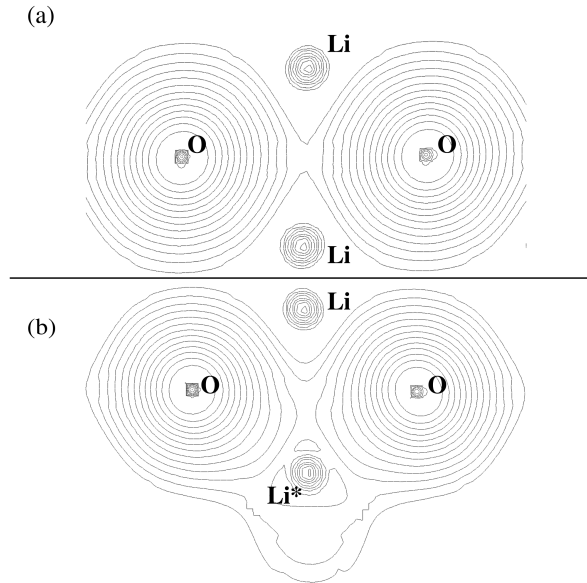


Figure 4.2: Electron density map of Li<sub>2</sub>O before (a) and after (b) introduction of a core hole on the starred atom. The contours are on equal logarithmic scales.

being sufficient to isolate core holes. Calculating the difference in electron occupancy shows a decrease of 0.88 electron in the basin of the excited lithium atom. This decrease is smaller than would be expected in the no screening limit, and according to Eq. 3.8 indicates that the hole is 12% screened. A third calculation is performed using a correspondingly decreased hole size to obtain a final spectra. The K edge ELNES from all three simulations are compared to experiment in Fig 4.3.

In comparison to experiment, the full hole provides good agreement, as previously predicted in the literature [13]. However, the screened hole provides a superior result, which can be emphasized by measuring the ratio of the two peaks at  $\sim 55\text{eV}$  and  $\sim 58\text{ eV}$ . A quantitative comparison of the values, presented in Table 4.1, reveals a dramatic improvement, decreasing the error in the peak ratio, from 20% to 6%.

Table 4.1: The ratio of intensities in the  $\text{Li}_2\text{O}$  spectra between the two peaks at 55 eV and 58 eV. Errors were calculated relative to experiment.

	Ratio	Error
Experiment	0.71	-
Full Hole	0.85	20%
Screened Hole	0.66	6%

## 4.2 Metallic Lithium

Metallic lithium has been predicted to exhibit no core hole effects due to a large degree of valence screening [32; 92; 93]. Being elemental, it inherently satisfies the DOS conditions, and only the PDOS is calculated, Fig 4.4. A density plot supports the notion of heavy shielding, revealing that core holes attract a large number of neighbouring valence electrons, see Fig 4.5. The response to the excited atom is more aggressive than in  $\text{Li}_2\text{O}$ , implying a stronger screening impact. Calculating the screening factor reveals that the lithium core hole

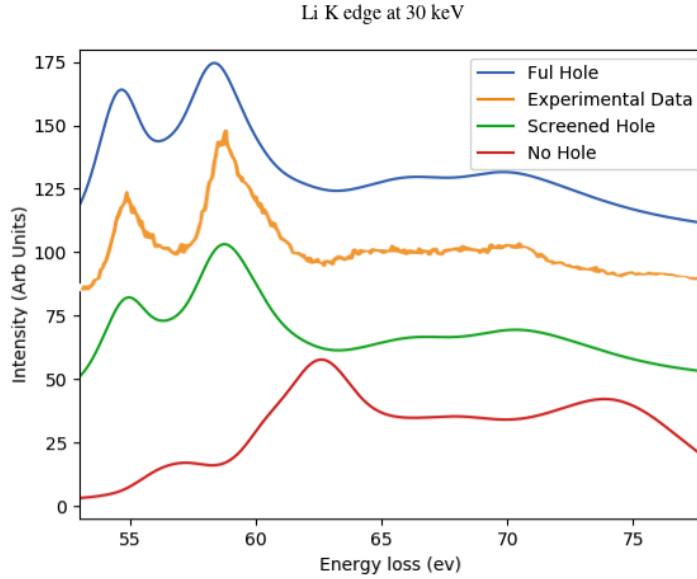


Figure 4.3: Lithium K edge of  $\text{Li}_2\text{O}$  from the three calculations taken with varying degrees of core hole.

is  $\sim 41\%$  screened, larger than in  $\text{Li}_2\text{O}$ , but less than the full screening predicted in literature.

A comparison of the various core hole cases with experimental spectra is presented in Fig 4.6. The literature again predicts the superior agreement between full hole and no hole, but both are inferior to the screened hole result. Of particular note is the small peak located at  $\sim 58$  eV, which is underestimated, in the no hole spectra, overestimated in the full hole, and correctly accounted for in the screened case. The only moderate (41%) screening goes against common convention in the literature that metals do not exhibit core hole effects. Other cases of metals requiring core holes have been previously highlighted such as the copper  $L_3$  edge and the significant improvements observed with lithium suggest that screened core holes should be included or at least calculated in all cases [87]. It should be noted that lithium's lack of core electron screening may be contributing to larger core hole effects, which would be lessened for deep core states in heavier elements.

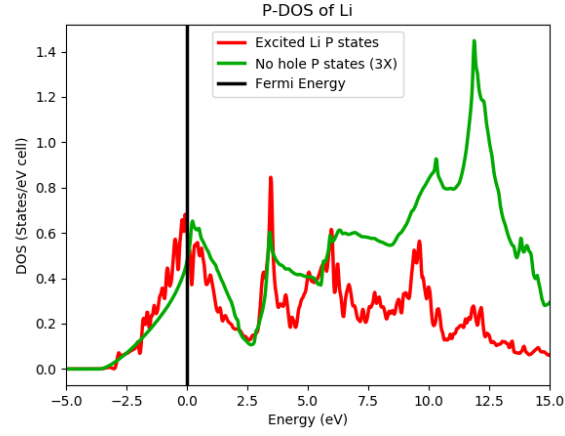


Figure 4.4: PDOS of lithium P states in metallic lithium, with and without a core hole.

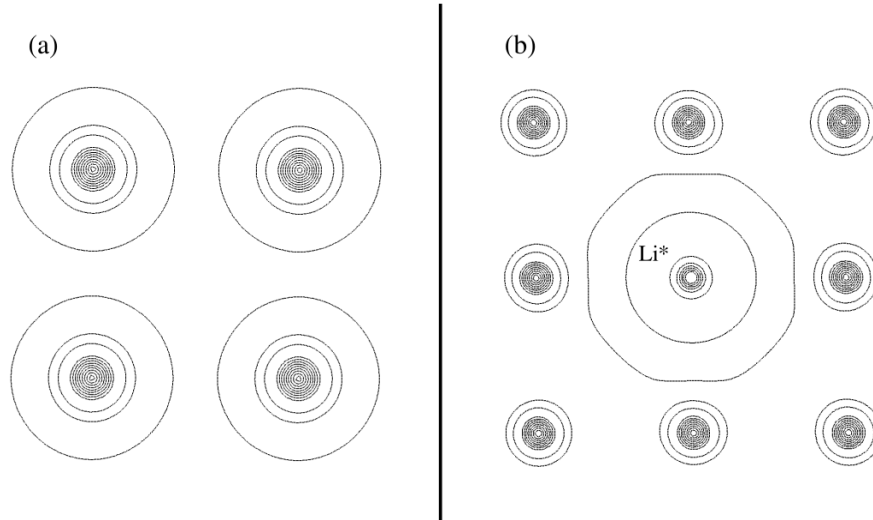


Figure 4.5: Electron density map of metallic lithium, before (a) and after (b) introduction of a core hole on the starred atom. The contours are on equal logarithmic scales.



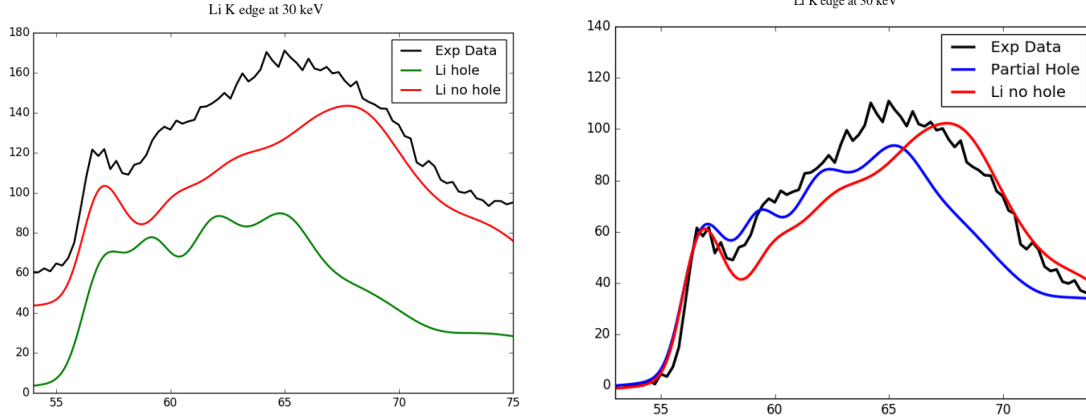


Figure 4.6: Lithium K edge of Li from the three calculations taken with varying degrees of core hole. On the left, the full and no hole results are presented, on the right the screened hole spectrum is compared to the no hole spectrum, both normalized to the experimental result at 56 eV. No vertical offset is applied on the right hand graph to better illustrate the differences between the spectra.

### 4.3 Lithium Fluoride

LiF has been one of the more published EELS results for lithium and simulations have obtained good agreement with a full core hole approximation [13; 73]. The DOS indicates that core hole effects should be included, Fig 4.7. A qualitative probe of the electron density after introducing a core hole reveals lesser effects than observed in Li and  $\text{Li}_2\text{O}$ , see Fig 4.8. The introduction of a hole produces minor responses from the electron density, and these are largely limited to slight distortions in the fluorine electron clouds. Additionally, despite the loss of a core electron, the density around the excited lithium atom retains much of its initial form. The minimal effect of introducing a core hole is reflective of fluorine’s high electronegativity and the ionic nature of LiF which “freezes” all of the electrons in place and minimizes valence electron screening. This effect is confirmed by calculating the screening coefficient which was determined to be zero in this case. Consequently, LiF represents the no screening case of Eq. 3.5 and the full hole spectra can be taken as the final spectrum. Plotting the spectra against experiment confirms that a full hole does indeed produce good

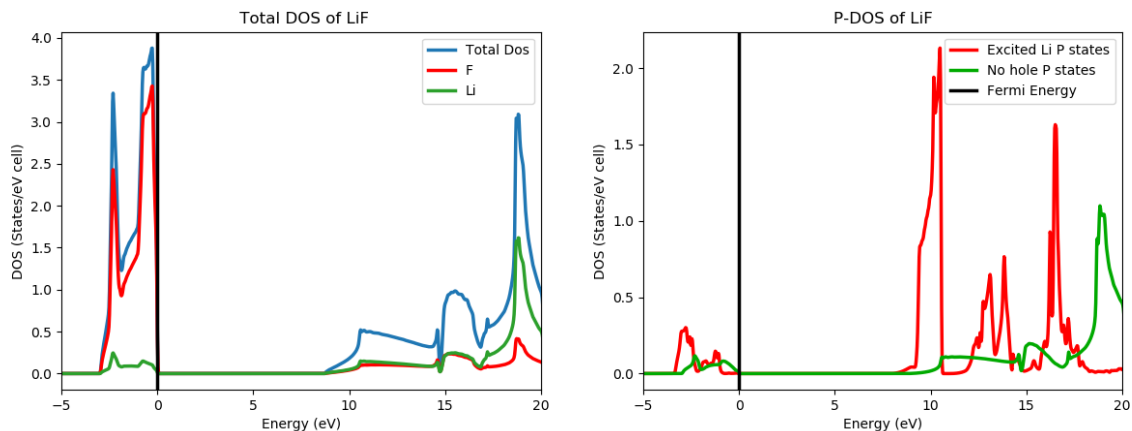


Figure 4.7: DOS for LiF (left) and Lithium P states (right). Note the comparable Li vs O contributions in the unoccupied DOS around 8-15 eV, as well as the dramatic changes resulting from insertion of a core hole, the large peaks at 10eV,13 and 14 eV.

agreement, Fig 4.9. The lack of screening in LiF also explains the good results obtained previously in literature when using only a full hole. It also confirms the theory that inserting a full hole can be sufficient in the case of strong insulators, although again, lithium's lack of core electron screening may be contributing to this result.

## 4.4 Li-LiF Mixture

The full importance of including screening in core hole calculations is demonstrated when investigating a mixed phase crystal. When obtaining the spectra for LiF, a transformation to metallic lithium is observed, due to the beam damage. Such a transformation has been previously reported in alkali earth metal-halogen compounds and is attributed to the formation of F-centers allowing the halogen to diffuse and evaporate [32]. During this transformation, an acquired intermediate spectra displays both LiF and metallic lithium components. To investigate the transformation and confirm the mechanism, a linear combination of the spectra from metallic lithium and LiF is compared to the experimental result, see Fig 4.10a. The good agreement obtained here supports both the inclusion of screening in metallic lithium

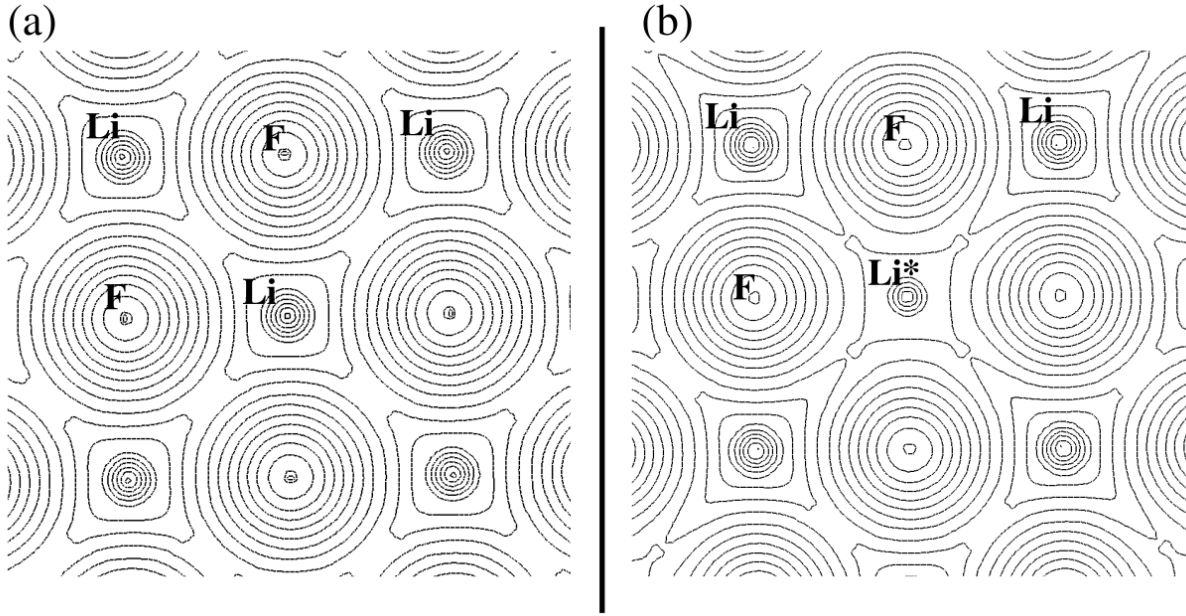


Figure 4.8: Electron density map of LiF, before (a) and after (b) introduction of a core hole on the starred atom. The contours are on equal logarithmic scales.

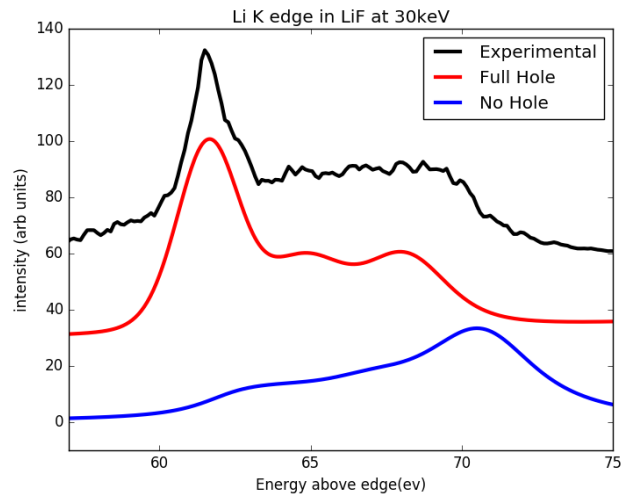


Figure 4.9: Lithium K edge of LiF from the two calculations taken with varying degrees of core hole.

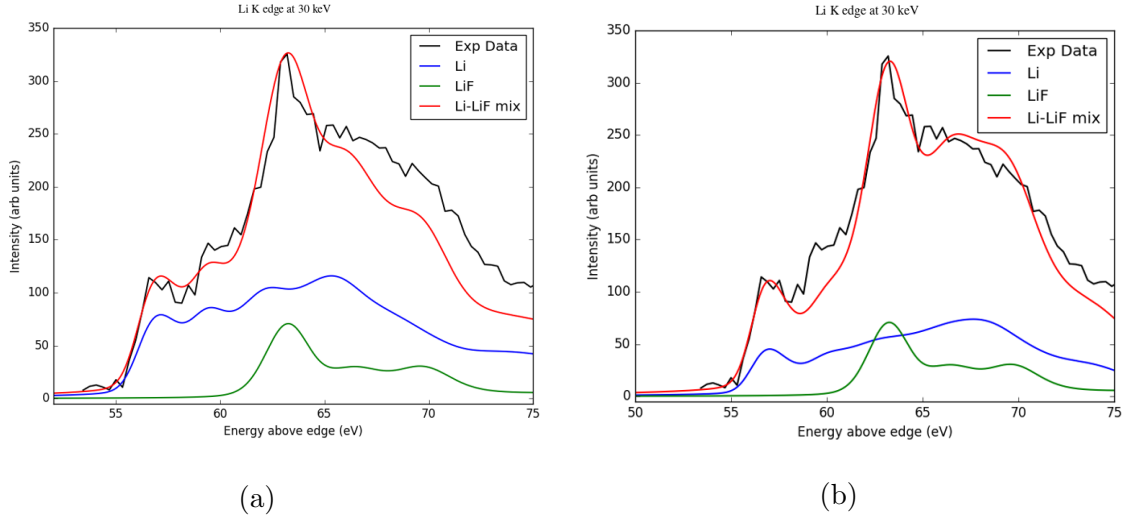


Figure 4.10: Lithium K edge of Li-LiF mix using full hole LiF spectrum and screened (a) and unscreened (b) metallic lithium spectrum.

and that the sample contains only metallic lithium and LiF, with no intermediate phases or contamination. The importance of screening is highlighted in Fig 4.10b, where the no hole lithium spectra is used, resulting in a fit that fails to reproduce the peak at 59eV. This unaccounted for peak would prevent such an analysis from confirming the purity of the sample and the mechanism behind the transformation.

## 4.5 Discussion

The cases analyzed above highlight the importance of including a core hole and screening effects when calculating ELNES of the lithium K edge. In every case, a core hole was necessary, including metallic lithium which has been predicted to not exhibit core hole effects. Additionally, every case except LiF exhibited non negligible amounts of screening and applying the first order method developed in Chapter 3 results in dramatic improvements to experimental agreement. The impact of including screening in ELNES calculations is made more apparent when dealing with unknown cases such as the Li-LiF mixture where it is essential to fingerprinting the near edge structure. The improvement to the peak ratio in

Li<sub>2</sub>O is another key feature in terms of identifying oxidation on lithium edges, or taking the steps to quantitative analysis.

Having confirmed that the method improves the accuracy of results, the effectiveness and applicability of the method is discussed below. The screening calculations presented in this work do not depend on any additional empirical data relative to standard DFT. Additionally, while three spectra are presented in each case for comparison (no hole, screened hole, and full hole), the technique predicts only a single correct result. The current method in literature of choosing between hole or no hole introduces a degree of uncertainty, as multiple correct spectra are predicted for each case. Any resulting disagreement can then be attributed to either screening effects or error. By only producing a single calculation which includes screening, this uncertainty is removed. Another major benefit to the method is that it scales at the same rate as conventional DFT. The largest computational cost occurs in the requirement to perform a third DFT calculations in order to obtain the screened result, an increase that scales at the same rate as the initial calculations. Consequently, the method can be reasonably applied to any system that could be analyzed previously. It is also of note that the shielding calculations presented in this work are implemented in the cross section method, one of the more lightweight first principle methods of calculating ELNES.

The success of the screening calculation when applied to lithium materials brings the generality of the approach into question. There are two regions where the technique is likely to fail: core electron screening and handling covalent bonds. As mentioned in Section 3.3, core electron screening is ignored when calculating screening on the Li K edge. For the K edges of heavier elements this component will increase, and be required when determining the valence electron screening. The degree of core electron screening of heavier elements can be tested by investigating the effect of replacing lithium with sodium, the next alkali earth metal. Sodium has an additional eight core electrons relative to lithium, but has similar properties. Using the method developed in this work to calculate the valence electron

response of LiCl and NaCl gives them as 0.16 and 0.14 respectively. The 0.02 electron difference can be attributed to core electron screening and suggest that this is small enough to be ignored for elements up to sodium. The sodium K edge lies around 1080 eV, which indicates that core electron shielding can be ignored for the majority of commonly used ELNES edges. More rigorous Hartree-Fock shielding calculations are required to fully confirm this result.

While core electron shielding may be negligible, covalent systems present a different set of challenges. The complications arise from more involved charge compensation mechanisms, which inhibit well defining the atomic basins. A more subtle method of determining the electron response is therefore required before a truly general approach can be implemented for all elements.

On a final note, the reliable agreement between calculation and experiment helps solidify the validity of performing EELS at 30 keV to analyze beam sensitive materials. The obtained experimental results were successful in reproducing agreement with the literature predictions when ignoring screening effects. The ability to detect fine features such as the small second peak in metallic lithium and perform quantitative ratio analysis in  $\text{Li}_2\text{O}$  emphasize the benefits of this method in analyzing beam sensitive materials.

# Chapter 5

## Conclusion

The main objectives of this work have been to develop a better means to simulate EELS spectra in the context of lithium materials and further verify the reliability of EELS at 30 keV. The first order screening method presented in Chapter 3 is a step in the right direction. It represents a dramatic improvement to the current methods and results in superior agreement between simulation and experiment in every case treated in this work. Most importantly, the method achieves these improvements without requiring empirical data or *ad hoc* assumptions and maintains the computational scaling rate of previous methods. Ensuring that the method relies only on first principles enables it to reveal unintuitive results such as the unscreened hole in metallic lithium, and predict unknown systems such as the metallic lithium-lithium fluoride compound. The success of the method at matching the experimental 30 keV EELS is a strong argument for both the validity and potential of low energy EELS as a tool to analyze beam sensitive materials.

However, there is still considerable room for improvement in EELS calculations. Experimental equipment and techniques continue to advance to study more intricate materials. The screening calculations in this work were tailored to lithium's various peculiarities and restricted to crystalline materials. The improvements for lithium materials highlight the need for more general methods to support all elements, as well as amorphous and non infinite

samples. Additionally, the majority of theoretical EELS analysis remains qualitative and the realm of quantitative EELS presents an entirely new set of challenges. The ultimate goal of entirely predictive methods capable of performing quantitative analysis on any material remains out of reach and presents a target for future efforts.



# Appendix A

## Calculation Details

In this appendix detailed, various calculation parameters are presented for the lithium calculations performed in this work.

### A.1 Crystal Structures

The unit cell crystal structures and atomic locations are presented below:

Table A.1: Cell parameters for  $\text{Li}_2\text{O}$ . Space group 225,  $Fm\bar{3}m$ , lattice parameter: 4.66Å

Atom	x	y	z
O	0.0	0.0	0.0
Li	0.25	0.25	0.25
Li	0.75	0.75	0.75

Table A.2: Cell parameters for metallic lithium. Space group 229,  $Im\bar{3}m$ , lattice parameter: 3.51Å

Atom	x	y	z
Li	0.0	0.0	0.0

Table A.3: Cell parameters for LiF. Space group 225,  $Fm\bar{3}m$ , lattice parameter: 4.057Å

Atom	x	y	z
Li	0.0	0.0	0.0
F	0.5	0.5	0.5

## A.2 DFT Parameters

Table A.4: Calculation parameters used for ground and core hole state calculations of materials. Supercells for Li<sub>2</sub>O and LiF were 2×2×2 and for metallic lithium 3×3×3 and used non-conventional symmetries to isolate core hole onto a single atom.

Case	K points	RKmax	RMT Li
Li	17×17×17	8.0	2.8
Li Supercell	6×6×6	8.0	2.8
Li <sub>2</sub> O	15×15×15	8.0	2.0
Li <sub>2</sub> O Supercell	8×8×8	8.0	2.0
LiF	15×15×15	8.0	2.0
LiF Supercell	8 ×8×8	8.0	2.0

# Bibliography

- [1] Naoki Nitta, Feixiang Wu, Jung Tae Lee, and Gleb Yushin. Li-ion battery materials: present and future. *Materials Today*, 18(5):252–264, June 2015.
- [2] Vinodkumar Etacheri, Rotem Marom, Ran Elazari, Gregory Salitra, and Doron Aurbach. Challenges in the development of advanced Li-ion batteries: a review. *Energy & Environmental Science*, 4(9):3243–3262, 2011.
- [3] Xia Lu, Liang Zhao, Xiaoqing He, Ruijuan Xiao, Lin Gu, Yong-Sheng Hu, Hong Li, Zhaoxiang Wang, Xiaofeng Duan, Liquan Chen, Joachim Maier, and Yuichi Ikuhara. Lithium Storage in  $\text{Li}_4\text{Ti}_5\text{O}_{12}$  Spinel: The Full Static Picture from Electron Microscopy. *Advanced Materials*, 24(24):3233–3238, 2012.
- [4] Zachary Arthur, Hsien-Chieh Chiu, Xia Lu, Ning Chen, Vincent Emond, Karim Zaghib, De-Tong Jiang, and George P. Demopoulos. Spontaneous reaction between an uncharged lithium iron silicate cathode and a  $\text{LiPF}_6$ -based electrolyte. *Chemical Communications*, 52(1):190–193, 2016.
- [5] Simon Mller, Patrick Pietsch, Ben-Elias Brandt, Paul Baade, Vincent De Andrade, Francesco De Carlo, and Vanessa Wood. Quantification and modeling of mechanical degradation in lithium-ion batteries based on nanoscale imaging. *Nature Communications*, 9(1):2340, June 2018.
- [6] A. Van der Ven, G. Ceder, M. Asta, and P. D. Tepesch. First-principles theory of ionic diffusion with nondilute carriers. *Physical Review B*, 64(18):184307, October 2001.
- [7] Hsien-chieh Chiu, Nicolas Brodusch, Raynald Gauvin, Abdelbast Guerfi, Karim Zaghib, and George P. Demopoulos. Aqueous Synthesized Nanostructured  $\text{Li}_4\text{Ti}_5\text{O}_{12}$  for High-Performance Lithium Ion Battery Anodes. *Journal of The Electrochemical Society*, 160(5):A3041–A3047, January 2013.

- [8] B. J. Inkson. Scanning electron microscopy (sem) and transmission electron microscopy (tem) for materials characterization. In Gerhard Hbschen, Iris Altpeter, Ralf Tschuncky, and Hans-Georg Herrmann, editors, *Materials Characterization Using Nondestructive Evaluation (NDE) Methods*, pages 17–43. Woodhead Publishing, 2016.
- [9] Thomas W. Hansen, Jakob B. Wagner, Poul L. Hansen, Sren Dahl, Haldor Topse, and Claus J. H. Jacobsen. Atomic-Resolution in Situ Transmission Electron Microscopy of a Promoter of a Heterogeneous Catalyst. *Science*, 294(5546):1508–1510, November 2001.
- [10] Shunsuke Kobayashi, Craig A. J. Fisher, Akihide Kuwabara, Yoshio Ukyo, and Yuichi Ikuhara. Quantitative analysis of Li distributions in battery material  $\text{Li}_{1-x}\text{FePO}_4$  using Fe M2,3-edge and valence electron energy loss spectra. *Microscopy*, 66(4):254–260, August 2017.
- [11] RF Egerton. EELS in the electron microscope. *Springer, New York p*, 226, 1986.
- [12] Takeshi Sunaoshi, Yoshihisa Orai, Hiroyuki Ito, Takeshi Ogashiwa, Toshihide Agemura, and Mitsuru Konno. 30 kV STEM imaging with lattice resolution using a high resolution cold FE-SEM, 2012.
- [13] V. Mauchamp, F. Boucher, G. Ouvrard, and P. Moreau. Ab initio simulation of the electron energy-loss near-edge structures at the LiK edge in Li,  $\text{Li}_2\text{O}$ , and  $\text{LiMn}_2\text{O}_4$ . *Physical Review B*, 74(11):115106, 2006. WOS:000240872300038.
- [14] V. Mauchamp, P. Moreau, G. Ouvrard, and F. Boucher. Local field effects at Li K edges in electron energy-loss spectra of Li,  $\text{Li}_2\text{O}$  and  $\text{LiF}$ . *Physical Review B*, 77(4):045117, January 2008.
- [15] Joseph I. Goldstein, Dale E. Newbury, Patrick Echlin, David C. Joy, Charles E. Lyman, Eric Lifshin, Linda Sawyer, and Joseph R. Michael. *Scanning Electron Microscopy and X-ray Microanalysis*. Springer, Boston, MA, 2003.

- [16] Michael J. Rust, Mark Bates, and Xiaowei Zhuang. Sub-diffraction-limit imaging by stochastic optical reconstruction microscopy (storm). *Nature Methods*, 3(10):793–796, 2006.
- [17] Eugene Hecht. Optics. *Addison Wesley*, 997:213–214, 1998.
- [18] Alfredo M. Morales and Charles M. Lieber. A Laser Ablation Method for the Synthesis of Crystalline Semiconductor Nanowires. *Science*, 279(5348):208–211, 1998.
- [19] David B. Williams and C. Barry Carter. *Transmission electron microscopy: a textbook for materials science*. Springer, New York, 2nd ed edition, 2008.
- [20] Ludwig Reimer. Electron optics of a scanning electron microscope. In *Scanning Electron Microscopy*, Springer Series in Optical Sciences, pages 13–56. Springer, Berlin, Heidelberg, 1998.
- [21] Maria Varela, Jaume Gazquez, and Stephen J. Pennycook. STEM-EELS imaging of complex oxides and interfaces. *MRS Bulletin*, 37(1):29–35, 2012.
- [22] Christian Colliex. An illustrated review of various factors governing the high spatial resolution capabilities in eels microanalysis. *Ultramicroscopy*, 18(1):131–150, 1985.
- [23] T. Malis, S. C. Cheng, and R. F. Egerton. EELS log-ratio technique for specimen-thickness measurement in the tem. *Journal of Electron Microscopy Technique*, 8(2):193–200, 1988.
- [24] Jaysen Nelayah, Mathieu Kociak, Odile Stphan, F. Javier Garca de Abajo, Marcel Tenc, Luc Henrard, Dario Taverna, Isabel Pastoriza-Santos, Luis M. Liz-Marzn, and Christian Colliex. Mapping surface plasmons on a single metallic nanoparticle. *Nature Physics*, 3(5):348–353, 2007.
- [25] G. Torrisi, A. Di Mauro, M. Scuderi, G. Nicotra, and G. Impellizzeri. Atomic layer deposition of ZnO/TiO<sub>2</sub> multilayers: towards the understanding of Ti-doping in ZnO thin films. *RSC Advances*, 6(91):88886–88895, 2016.

- [26] Ann-Lenaig Hamon, Jo Verbeeck, Dominique Schryvers, Jan Benedikt, and Richard M. C. M. v d Sanden. ELNES study of carbon K-edge spectra of plasma deposited carbon films. *Journal of Materials Chemistry*, 14(13):2030–2035, 2004.
- [27] Helmut Kohl and Ludwig Reimer. *Transmission Electron Microscopy: Physics of Image Formation*. Number 36 in Springer Series in Optical Sciences. Springer, New York, NY, 2008.
- [28] David J Griffiths. *Introduction to electrodynamics*. Pearson, 2013. OCLC: 794711764.
- [29] Jordan A. Hachtel, Andrew R. Lupini, and Juan Carlos Idrobo. Exploring the capabilities of monochromated electron energy loss spectroscopy in the infrared regime. *Scientific Reports*, 8(1):5637, April 2018.
- [30] R. F. Egerton, P. Li, and M. Malac. Radiation damage in the TEM and SEM. *Micron*, 35(6):399–409, August 2004.
- [31] R. F. Egerton, R. McLeod, F. Wang, and M. Malac. Basic questions related to electron-induced sputtering in the TEM. *Ultramicroscopy*, 110(8):991–997, July 2010.
- [32] R. F. Egerton, P. A. Crozier, and P. Rice. Electron energy-loss spectroscopy and chemical change. *Ultramicroscopy*, 23(3):305–312, January 1987.
- [33] Kisuk Kang and Gerbrand Ceder. Factors that affect Li mobility in layered lithium transition metal oxides. *Physical Review B*, 74(9):094105, September 2006.
- [34] H. Tenailleau and J. M. Martin. A new background subtraction for low-energy eels core edges. *Journal of Microscopy*, 166(3):297–306, 1992.
- [35] J. Verbeeck and S. Van Aert. Model based quantification of EELS spectra. *Ultramicroscopy*, 101(2):207–224, 2004.
- [36] R. F. Egerton. Inelastic scattering of 80 keV electrons in amorphous carbon. *The Philosophical Magazine: A Journal of Theoretical Experimental and Applied Physics*, 31(1):199–215, 1975.

- [37] T. Riedl, T. Gemming, and K. Wetzig. Extraction of EELS white-line intensities of manganese compounds: Methods, accuracy, and valence sensitivity. *Ultramicroscopy*, 106(4):284–291, March 2006.
- [38] R. F. Egerton, B. G. Williams, and T. G. Sparrow. Fourier deconvolution of electron energy-loss spectra. *Proc. R. Soc. Lond. A*, 398(1815):395–404, April 1985.
- [39] A. Gloter, A. Douiri, M. Tenc, and C. Colliex. Improving energy resolution of eels spectra: an alternative to the monochromator solution. *Ultramicroscopy*, 96(3):385–400, 2003.
- [40] J. E. Krist. Deconvolution of hubble space telescope images using simulated point spread functions. *Astronomical Data Analysis Software and Systems I, A.S.P. Conference Series*, 25:226–227, 1992.
- [41] Frank de Groot. High-resolution x-ray emission and x-ray absorption spectroscopy, 2001.
- [42] Ian MacLaren, Kirsty J. Annand, Colin Black, and Alan J. Craven. EELS at very high energy losses. *Microscopy*, 67(suppl.1):i78–i85, 2018.
- [43] Codes - NOMAD, <https://www.nomad-coe.eu/externals/codes>, 2018.
- [44] David S Sholl and Janice A Steckel. *Density functional theory: a practical introduction*. Wiley, Hoboken, N.J., 2009. OCLC: 441874984.
- [45] E. K. U. Gross and K. Burke. *Time-Dependent Density Functional Theory*. Lecture Notes in Physics. Springer, Berlin, Heidelberg, 2006.
- [46] G. Grff, H. Kalinowsky, and J. Traut. A direct determination of the proton electron mass ratio. *Zeitschrift fr Physik A Atoms and Nuclei*, 297(1):35–39, 1980.
- [47] P. Hohenberg and W. Kohn. Inhomogeneous electron gas. *Physical Review*, 136(3B):B864–B871, 1964.

- [48] R G Parr. Density Functional Theory. *Annual Review of Physical Chemistry*, 34(1):631–656, 1983.
- [49] Jianmin Tao, John P. Perdew, Viktor N. Staroverov, and Gustavo E. Scuseria. Climbing the Density Functional Ladder: Nonempirical Meta-Generalized Gradient Approximation Designed for Molecules and Solids. *Physical Review Letters*, 91(14):146401, 2003.
- [50] W. Kohn and L. J. Sham. Self-Consistent Equations Including Exchange and Correlation Effects. *Physical Review*, 140(4A):A1133–A1138, 1965.
- [51] John P. Perdew, Kieron Burke, and Yue Wang. Generalized gradient approximation for the exchange-correlation hole of a many-electron system. *Physical Review B*, 54(23):16533–16539, 1996.
- [52] Axel D. Becke and Erin R. Johnson. A simple effective potential for exchange. *The Journal of Chemical Physics*, 124(22):221101, 2006.
- [53] M. J. Frisch et al. Gaussian16 Revision B.01, 2016. Gaussian Inc. Wallingford CT.
- [54] Stephan Mohr, Marc Eixarch, Maximilian Amsler, Mervi J. Mantsinen, and Luigi Genovese. Linear scaling DFT calculations for large tungsten systems using an optimized local basis. *Nuclear Materials and Energy*, 15:64–70, May 2018.
- [55] David J. Griffiths. *Introduction to quantum mechanics*. Pearson Prentice Hall, Upper Saddle River, NJ, 2005.
- [56] Paolo Giannozzi and Baroni. QUANTUM ESPRESSO: a modular and open-source software project for quantum simulations of materials. *Journal of Physics: Condensed Matter*, 21(39):395502, 2009.
- [57] Jrgen Hafner. Ab-initio simulations of materials using VASP: Density-functional theory and beyond. *Journal of Computational Chemistry*, 29(13):2044–2078, 2009.



- [58] K. Schwarz, P. Blaha, and G. K. H. Madsen. Electronic structure calculations of solids using the WIEN2k package for material sciences. *Computer Physics Communications*, 147(1):71–76, 2002.
- [59] David J. Singh and Lars Nordström. *Planewaves, Pseudopotentials, and the LAPW Method*. Springer, New York, NY, UNITED STATES, 2006.
- [60] Richard F. W. Bader. Atoms in Molecules. In *Encyclopedia of Computational Chemistry*. American Cancer Society, 2002.
- [61] Richard F. W. Bader. A quantum theory of molecular structure and its applications. *Chemical Reviews*, 91(5):893–928, 1991.
- [62] A. Otero-de-la Roza, Erin R. Johnson, and Victor Luaa. Critic2: A program for real-space analysis of quantum chemical interactions in solids. *Computer Physics Communications*, 185(3):1007–1018, 2014.
- [63] Malte Fugel, Jens Beckmann, Dylan Jayatilaka, Gerald V. Gibbs, and Simon Grabowsky. A Variety of Bond Analysis Methods, One Answer? An Investigation of the ElementOxygen Bond of Hydroxides HnXOH. *Chemistry A European Journal*, 24(23):6248–6261, 2018.
- [64] Andris Gulans, Stefan Kontur, Christian Meisenbichler, Dmitrii Nabok, Pasquale Pavone, Santiago Rigamonti, Stephan Sagmeister, Ute Werner, and Claudia Draxl. exciting: a full-potential all-electron package implementing density-functional theory and many-body perturbation theory. *Journal of Physics: Condensed Matter*, 26(36):363202, 2014.
- [65] Claudia Ambrosch-Draxl and Jorge O. Sofo. Linear optical properties of solids within the full-potential linearized augmented planewave method. *Computer Physics Communications*, 175(1):1–14, 2006.

- [66] A. L. Ankudinov, B. Ravel, J. J. Rehr, and S. D. Conradson. Real-space multiple-scattering calculation and interpretation of x-ray-absorption near-edge structure. *Physical Review B*, 58(12):7565–7576, 1998.
- [67] C. Hebert. Practical aspects of running the WIEN2k code for electron spectroscopy. *Micron*, 38(1):12–28, 2007. WOS:000241994700002.
- [68] E. E. Salpeter and H. A. Bethe. A Relativistic Equation for Bound-State Problems. *Physical Review*, 84(6):1232–1242, 1951.
- [69] Stephan Sagmeister and Claudia Ambrosch-Draxl. Time-dependent density functional theory versus BetheSalpeter equation: an all-electron study. *Physical Chemistry Chemical Physics*, 11(22):4451–4457, 2009.
- [70] P. A. Lee and G. Beni. New method for the calculation of atomic phase shifts: Application to extended x-ray absorption fine structure (EXAFS) in molecules and crystals. *Physical Review B*, 15(6):2862–2883, 1977.
- [71] J. Luitz, M. Maier, C. Hbert, P. Schattschneider, P. Blaha, K. Schwarz, and B. Jouffrey. Partial core hole screening in the Cu L3 edge. *The European Physical Journal B*, 21(3):363–367, 2001.
- [72] Vincent Mauchamp, Michel Jaouen, and Peter Schattschneider. Core-hole effect in the one-particle approximation revisited from density functional theory. *Physical Review B*, 79(23):235106, 2009.
- [73] Shang-Peng Gao, Chris J. Pickard, Mike C. Payne, Jing Zhu, and Jun Yuan. Theory of core-hole effects in 1s core-level spectroscopy of the first-row elements. *Physical Review B*, 77(11):115122, 2008.
- [74] J. A. Soininen and Eric L. Shirley. Scheme to calculate core hole–electron interactions in solids. *Physical Review B*, 64(16):165112, 2001.

- [75] R. Brydson, J. Bruley, and J. M. Thomas. Further evidence for core-hole effects in the near-edge structures of light-element K-edges. *Chemical Physics Letters*, 149(4):343–347, 1988.
- [76] T. P. Hardcastle, C. R. Seabourne, D. M. Kepaptsoglou, T. Susi, R. J. Nicholls, R. M. D. Brydson, A. J. Scott, and Q. M. Ramasse. Robust theoretical modelling of core ionisation edges for quantitative electron energy loss spectroscopy of B- and N-doped graphene. *Journal of Physics: Condensed Matter*, 29(22):225303, 2017.
- [77] E. W. Tait, L. E. Ratcliff, M. C. Payne, P. D. Haynes, and N. D. M. Hine. Simulation of electron energy loss spectra of nanomaterials with linear-scaling density functional theory. *Journal of Physics: Condensed Matter*, 28(19):195202, 2016.
- [78] P. Jegadeesan, S. Amirthapandian, Gurpreet Kaur, Sharat Chandra, and B. K. Panigrahi. Characterization of MO bonds in Y2ti2o7 and Y2tio5 with EELS. *physica status solidi (b)*, 252(1):206–211, 2015.
- [79] Damien Magne, Vincent Mauchamp, Stphane Clrier, Patrick Chartier, and Thierry Cabioch. Site-projected electronic structure of two-dimensional Ti 3 C 2 MXene: the role of the surface functionalization groups. *Physical Chemistry Chemical Physics*, 18(45):30946–30953, 2016.
- [80] P. Agrawal, J. Guo, P. Yu, C. Hebert, D. Passerone, R. Erni, and M. D. Rossell. Strain-driven oxygen deficiency in multiferroic SrMnO3 thin films. *Physical Review B*, 94(10):104101, September 2016.
- [81] Kota Tomita, Tomohiro Miyata, Weine Olovsson, and Teruyasu Mizoguchi. Strong excitonic interactions in the oxygen K-edge of perovskite oxides. *Ultramicroscopy*, 178:105–111, July 2017.
- [82] Nicholas L. McDougall, Rebecca J. Nicholls, Jim G. Partridge, and Dougal G. McCulloch. The Near Edge Structure of Hexagonal Boron Nitride. *Microscopy and Microanalysis*, 20(4):1053–1059, August 2014.

- [83] Tomohiro Miyata and Teruyasu Mizoguchi. Fabrication of thin TEM sample of ionic liquid for high-resolution ELNES measurements. *Ultramicroscopy*, 178:81–87, July 2017.
- [84] Robert F. Klie, Haibin Su, Yimei Zhu, James W. Davenport, Juan-Carlos Idrobo, Nigel D. Browning, and Peter D. Nellist. Measuring the hole-state anisotropy in MgB<sub>2</sub> by electron energy-loss spectroscopy. *Physical Review B*, 67(14):144508, April 2003.
- [85] Stefan Nufer, Thomas Gemming, Christian Elssner, Sibylle Kstlmeier, and Manfred Rhle. Core-hole effect in the ELNES of alpha-Al<sub>2</sub>O<sub>3</sub>: experiment and theory. *Ultramicroscopy*, 86(3):339–342, February 2001.
- [86] Shang-Peng Gao, Chris J. Pickard, Alexander Perlov, and Victor Milman. Core-level spectroscopy calculation and the plane wave pseudopotential method. *Journal of Physics: Condensed Matter*, 21(10):104203, 2009.
- [87] C. Hebert, J. Luitz, and P. Schattschneider. Improvement of energy loss near edge structure calculation using Wien2k. *Micron*, 34(3-5):219–225, 2003. WOS:000184846600012.
- [88] Kevin Jorissen. *The ab initio calculation of relativistic electron energy loss spectra*. PhD thesis, University of Antwerp, 2007.
- [89] W. Kohn and L. J. Sham. Self-Consistent Equations Including Exchange and Correlation Effects. *Physical Review*, 140(4A):A1133–A1138, 1965.
- [90] E. L. Shirley, J. A. Soininen, and J. J. Rehr. Modeling core-hole screening in core-excitation spectroscopies. *Physica Scripta*, 2005(T115):31, 2005.
- [91] Dang-Rong Liu, H. E. George Rommal, and David B. Williams. Preparation of lithium specimens for transmission electron microscopy. *Journal of Electron Microscopy Technique*, 4(4):381–383, 1986.
- [92] Peter Rez and David A. Muller. The Theory and Interpretation of Electron Energy Loss Near-Edge Fine Structure. *Annual Review of Materials Research*, 38(1):535–558, 2008.

- [93] Dang-Rong Lru and David B. Williams. The electron-energy-loss spectrum of lithium metal. *Philosophical Magazine B*, 53(6):L123–L128, June 1986.
- [94] J. Hubbard. Electron correlations in narrow energy bands. *Proc. R. Soc. Lond. A*, 276(1365):238–257, November 1963.